



North Country EMS Program Agency

“Serving Jefferson, Lewis & St. Lawrence Counties”

Ann M. Smith, EMT-CC, Director

Mysti L. Mattice, Secretary

Introduction

Six Program Agencies have collaborated on a quality assurance project within each region to collect data on the treatment of cardiac arrest patients. This data will be used to compare/review regional, state and even national data. The following Program Agencies: Central New York, Finger Lakes, Mid-State, Monroe-Livingston, North Country and Susquehanna participated in the study.

Goal and Objectives

This project will provide data that will be used to identify strengths and weaknesses in the treatment of cardiac arrest patients. This will assist in streamlining educational programs that will fit our provider’s needs. This data will also provide us with protocol compliance at both BLS and ALS levels.

Methodology

The Program Agencies will collect data from all the Pre-Hospital Care Reports submitted during the month of February 2011.

Results

North Country Region had twenty one (21) Pre-Hospital Cardiac Arrests. Two (2) Cardiac Arrests have been removed from the study due to lack of information as the First Response agency was from outside our region. Three (3) other Cardiac Arrests have been removed as no resuscitation was performed, they were DOAs. All North Country Hospitals and Ambulance Services participated in this study. Information from this study was taken from North Country Region Pre-Hospital Care Reports;

CPR

- **Bystander CPR initiated:
38%**
- **CPR initiated in less than *5 minutes:
38%**
- **CPR initiated in greater than *10 minutes:
63%**

**As reported from time of arrest*



North Country EMS Program Agency

“Serving Jefferson, Lewis & St. Lawrence Counties”

Ann M. Smith, EMT-CC, Director

Mysti L. Mattice, Secretary

AED

- **Less than 5 minutes:**
19%
- **Greater than 10 minutes:**
88%
- **Shock advised:**
19%
- **More than one shock advised:**
19%

Advanced Life Support – All Cardiac Arrest patients received Pre-Hospital ALS Care

- **Patient received ALS care in less than *5 minutes:**
6%
- **Greater than *10 minutes:**
94%
- **Patient transported to Hospital:**
88%
- **ACLS guidelines followed:**
63%
- **Termination of resuscitation efforts:**
19%
- **Return of spontaneous circulation:**
6%

**As reported from time of arrest*



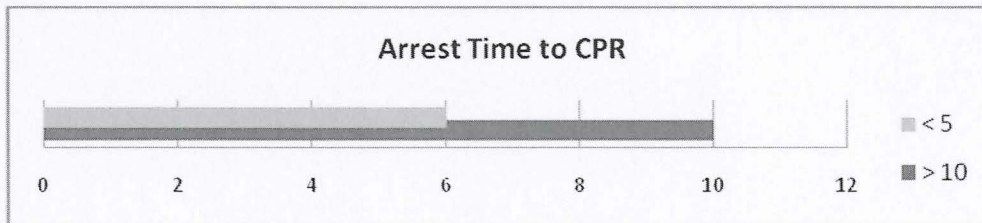
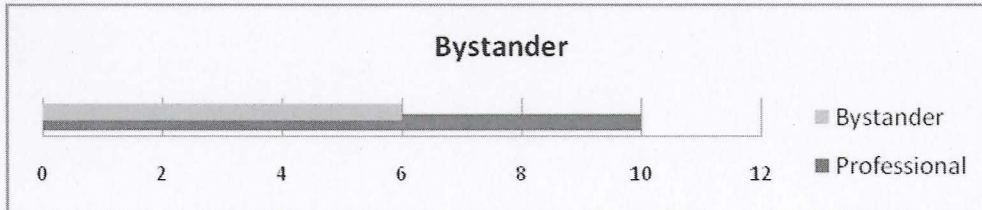
North Country EMS Program Agency

“Serving Jefferson, Lewis & St. Lawrence Counties”

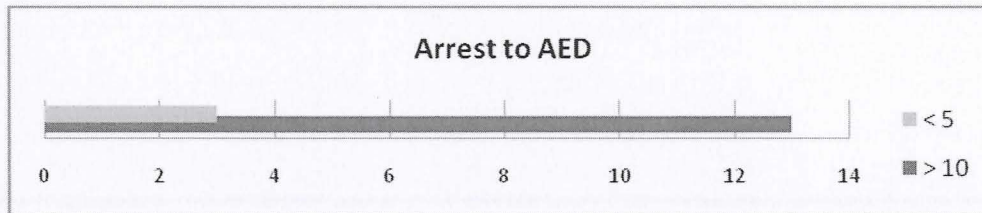
Ann M. Smith, EMT-CC, Director

Mysti L. Mattice, Secretary

CPR



AED



Advanced Life Support

