

Approved by the Lewis County EMS Council 11/21/06 and 6/15/10  
Reviewed by Lewis County LEPC 11/27/06 and Fire Advisory on 12/20/06  
Approved by the Lewis County 911 Oversight Committee on 1/25/07  
**Revised May 2010**

*Appendix 6-1*

**APPENDIX 6**

**LEWIS COUNTY  
MASS CASUALTY INCIDENT PLAN**

*Revised 11/06*  
**Implemented 2/1/07**

**TABLE OF CONTENTS**

	<u><b>Page</b></u>
<b>Response Sequence</b>	6-2
<b>Disaster Site Map</b>	6-3
<b>Description of Coordinating Officers</b>	
EMS Command Officer	6-4
Sheriff Deputy / Police Officer Director of Emergency Management	6-5
Fire and Rescue Officer Site Triage Officer	6-6
EMS Treatment Officer	6-7
EMS Transportation Officer and Fire Coordinators	6-8
<b>Definitions, Policy, Rationale and Procedure</b>	6-9
Beaver Falls Response	
Croghan, Constableville, and Harrisville response	6-10
Lewis County Search and Rescue and Lyons Falls response	6-11
Port Leyden, Turin, and West Leyden response	6-12

*Appendix 6-2*

**Sequence of EMS Response in Mass Casualty Incidents**

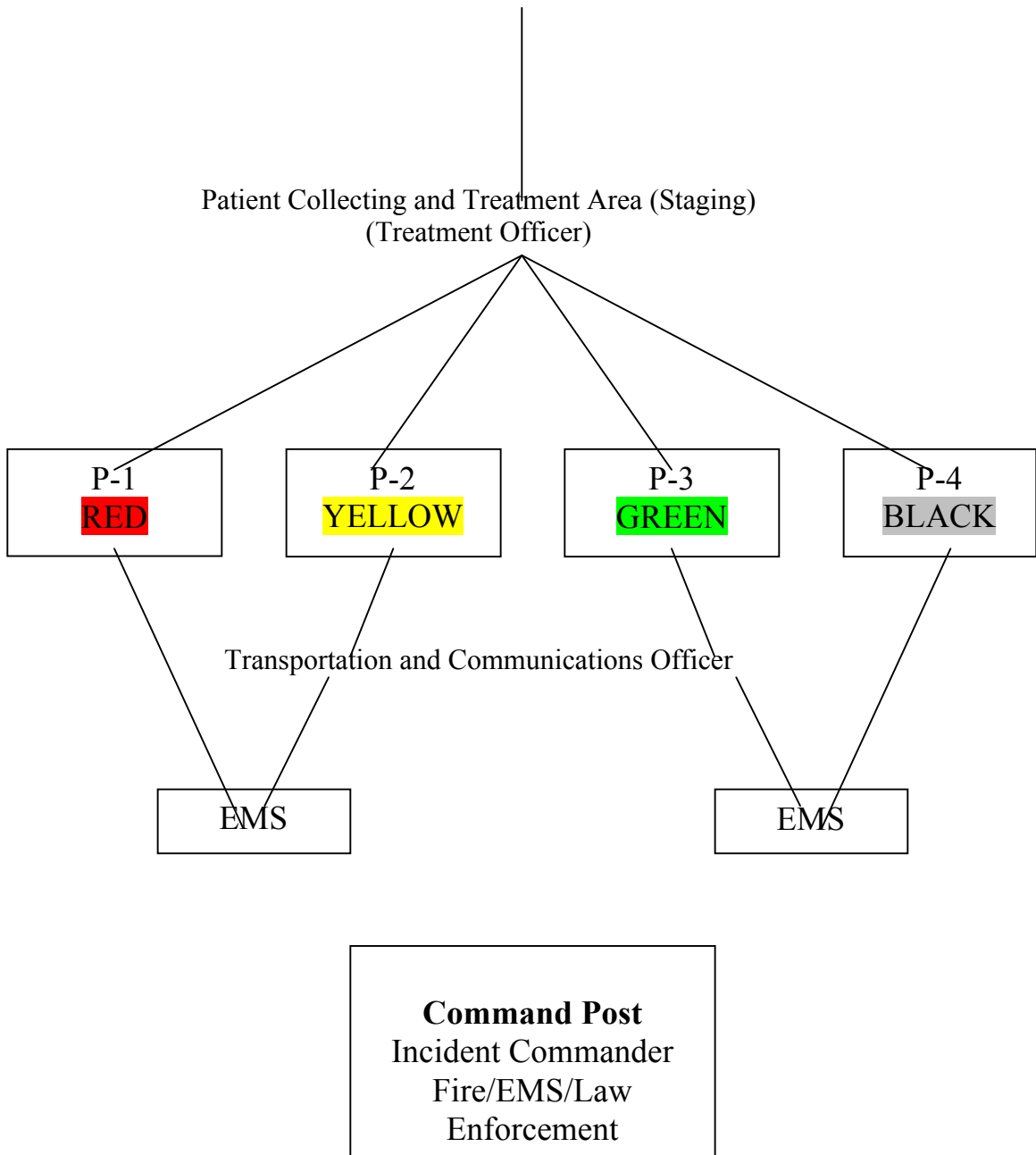
1. The First-In-Report is made to the 911 Center.
2. The Incident is confirmed and the number and types of casualties is estimated.
3. The dispatcher activates the response and mutual aid plan for the location and activates Fire and EMS Coordinators.
4. Dispatch, local and regional hospital, and coordinating agencies communications are established and the initial assessment of the incident is transmitted.
5. The National Incident Management System is instituted and a command post declared using ICS.
6. The First EMTs and First Responders at the incident site perform primary triage procedures consistent with the **SMART Triage System**.
7. A Patient Collecting/Treatment Area (Staging Area) is established as needed.
8. Patients are brought to the Patient Collecting/Treatment Area, evaluated, reclassified and identified using the SMART Triage System and Secondary Triage completed.
9. Patients are transported by priority to the appropriate hospital.

Approved by the Lewis County EMS Council 11/21/06 and 6/15/10  
Reviewed by Lewis County LEPC 11/27/06 and Fire Advisory on 12/20/06  
Approved by the Lewis County 911 Oversight Committee on 1/25/07  
**Revised May 2010**

*Appendix 6-3*

**DISASTER SITE**

(Site Triage Officer)



Approved by the Lewis County EMS Council 11/21/06 and 6/15/10  
Reviewed by Lewis County LEPC 11/27/06 and Fire Advisory on 12/20/06  
Approved by the Lewis County 911 Oversight Committee on 1/25/07  
**Revised May 2010**

#### *Appendix 6-4*

### **EMS Command Officer:**

#### **Qualifications and Assignments:**

The most senior crewmember of the first EMS unit arriving at the site of the incident is designated as the EMS Command Officer. His/Her driver must stay with the vehicle and the senior EMS crewmember is assigned to the Command Post to supervise all aspects of EMS at the incident unless relieved by an equivalent or higher trained EMS responder or County EMS Coordinator.

#### **Responsibilities:**

Establish and identify the Command Post area using ICS and unified Command and notifies the 911 dispatch center of it's location and the Level of Response needed.

Works in cooperation with the police and fire command officers at the command post.

Surveys and assesses the medical needs of the situation.

Determines the need for EMS equipment and manpower and requests additional resources as needed.

Confirms the number and type of casualties with local, county and/or regional EMS dispatch.

Provides initial notice and estimate of injuries to Medical Control on 155.340, by cell phone or through county or regional dispatch.

Directs and supervises the administration of all EMS operations.

Ensures that activities essential to EMS (ie. security, access, communications) are initiated by the appropriate agencies. Use of 155.400 as Disaster Frequency.

Designates the Triage Officer.

Designates the Treatment Officer.

Approved by the Lewis County EMS Council 11/21/06 and 6/15/10  
Reviewed by Lewis County LEPC 11/27/06 and Fire Advisory on 12/20/06  
Approved by the Lewis County 911 Oversight Committee on 1/25/07  
**Revised May 2010**

Designates the EMS Transportation Officer.

Coordinates other EMS personnel and activities.

Ensures establishment of a Patient Collecting/Treatment/Staging Area.

### *Appendix 6-5*

#### **Police Officer / Sheriff Deputy:**

##### **Qualifications and Assignments:**

The Police Chief/Sheriff or his designee is assigned to the Command Post.

##### **Responsibilities:**

Work in cooperation with Fire and EMS Command Officers.

Establishes perimeter security.

Assists in identifying and keeping an area open for the Patient Collecting and Treatment Area.

Maintains crowd and traffic control by establishing access and exit from the site of the incident, maintaining and access open for vehicles arriving later and providing one-way (in-out) traffic routes for ambulances.

Provides safety and security at the site of the incident, the immediate area and the morgue.

Notifies other police agencies, as needed.

Assists in transporting key personnel to the incident site.

Assists in notifying the following support services as needed. Medical Examiner/Coroner

#### **Director of Emergency Management:**

Notifies the County Chairman and/or manager and coordinates ancillary services to include but not limited to:

Approved by the Lewis County EMS Council 11/21/06 and 6/15/10  
Reviewed by Lewis County LEPC 11/27/06 and Fire Advisory on 12/20/06  
Approved by the Lewis County 911 Oversight Committee on 1/25/07  
**Revised May 2010**

- Public Information/Media
- Red Cross
- SEMO
- NYS DOH
- OFPC

### *Appendix 6-6*

#### **Fire and Rescue Officer:**

##### **Qualifications and Assignment:**

The Fire Chief or his designee is assigned to the command post.

##### **Responsibilities:**

Works in cooperation with Police and EMS Command Officers.

Provide necessary fire and rescue equipment at the site of the incident.

Directs the prevention and or suppression of fire at the incident site.

Coordinates all responding fire units.

Performs rescue and extrication of patients at the site of the incident.

Assigns fire and rescue squads and other medically trained fire personnel to treat and stabilize patients at the site of the incident under the direction of the Site Triage Officer.

Assist in the transport of patients from the incident site to the Patient Collection and Treatment Site.

Determines the need for instituting fire department mutual aid plans.

Assigns Fire Police to provide traffic control and assist with security as needed.

#### **Site Triage Officer:**

##### **Qualifications and Assignments:**

Approved by the Lewis County EMS Council 11/21/06 and 6/15/10  
Reviewed by Lewis County LEPC 11/27/06 and Fire Advisory on 12/20/06  
Approved by the Lewis County 911 Oversight Committee on 1/25/07  
**Revised May 2010**

A crewmember of the first or second EMS unit arriving at the site of the incident is designated as the Site Triage Officer and assigned to the site of the incident to supervise first stage triage and emergency medical care.

**Responsibilities:**

Establish use of the SMART Triage System consistent with Regional and State protocols.

Establishes procedures for transporting patients according to priority.

*Appendix 6-7*

Determines manpower needs at the site of the incident.

Coordinates EMS and other personnel assigned to provide emergency medical care at the site of the incident.

Maintains communication with the command post.

Coordinates the management of patients with the Treatment Officer.

Request supplies and equipment, as needed.

Coordinates transportation of patients to the Patient Collection and Treatment Area.

**EMS Treatment Officer:**

**Qualifications and Assignments:**

A crewmember of the second or third EMS Unit arriving at the site of the incident is designated the EMS Treatment Officer and assigned to the Patient Collecting/Treatment Area.

**Responsibilities:**

Establishes the Patient Collecting/Treatment Area, its entrance and exit points, triage point, patient flow patterns and patient holding area.

Sees that all patients are tagged appropriately and being treated accordingly.

Approved by the Lewis County EMS Council 11/21/06 and 6/15/10  
Reviewed by Lewis County LEPC 11/27/06 and Fire Advisory on 12/20/06  
Approved by the Lewis County 911 Oversight Committee on 1/25/07  
**Revised May 2010**

Determines need for EMS and/or medical equipment and manpower and requests additional resources, as needed in conjunction with the command post.

Coordinates the activities of the EMS personnel assigned to the Patient Collecting/Treatment Area.

Coordinates patient transportation with the EMS Transportation Officer.

### *Appendix 6-8*

#### **EMS Transportation/Communications Officer:**

##### **Qualifications and Assignments:**

A crewmember of one of the responding EMS units is designated as the EMS Transportation Officer and is assigned to the Ambulance Transportation Area.

##### **Responsibilities:**

Establishes and or maintains the ambulance vehicle holding area and an ambulance traffic flow pattern.

Coordinates the loading of patients into EMS units.

Determines the patient transportation flow patterns between the Treatment Area and the receiving hospital by communicating with the Resource Hospital.

Determines transportation priorities and hospital destinations with the Medical contact.

Communicates patient information (age, sex, type of injury, priority and vital signs) to the medical if requested.

Documents the patient's destination in the site dispatch log, and collects the top (yellow) copy of the disaster tag.

Maintains communication with the Command Post and Resource Hospital.

#### **Deputy Fire Coordinator(s):**

Approved by the Lewis County EMS Council 11/21/06 and 6/15/10  
 Reviewed by Lewis County LEPC 11/27/06 and Fire Advisory on 12/20/06  
 Approved by the Lewis County 911 Oversight Committee on 1/25/07  
**Revised May 2010**

**Qualifications and Responsibility/Assignments:**

The Deputy Fire Coordinator(s) must be familiar with the County MCI plan and Fire/EMS responsibilities in the MCI plan and will assist and provide advice as needed within the ICS structure.

*Appendix 6-9*

**Lewis County MCI Definitions:**

- Level I – 3-6 Patients
- Level II – 7-12 Patients
- Level III – Greater than 12 Patients

**POLICY:**

Utilizing the Incident Command System, EMS providers in Lewis County will implement this protocol anytime there are three or more patients involved in an EMS call/ response. Segments of this protocol may be utilized to more efficiently manage EMS scenes on a regular basis.

**RATIONALE:**

Implementation and utilization of the Incident Command System (ICS), specifically the MEDICAL SECTOR improves patient’s chances for- recovery and survival through the establishment of a clearly defined management structure that ensures timely and optimal utilization of all emergency resources. Early, specific notification to hospitals will optimize their opportunity to prepare. The goal is to minimize out of hospital time while optimizing pre-hospital care and treatment.

**PROCEDURE BY AGENCY:**

**NOTE: Lewis County Dispatch will automatically follow the plan below when 3 or more patients are confirmed injured by the 911 dispatcher and/or First Emergency Responder on scene. Additionally they will contact the Clearing House to place an Air Medical Service (Helicopter) on stand-by.**

**Beaver Falls**

<b>Level 1 Response (3-6)</b>	<b>Level 2 Response (7-12)</b>	<b>Level 3 Response &gt; 12 patients</b>
Beaver Falls 1 Ambulance Croghan1 Ambulance	All of Level One	All of Level one and Two
LCSR 1 Ambulance and ALS Rescue, additionally one crew at Station to cover local calls	2 <sup>nd</sup> ambulance from LCSR if available, still one crew at station for local calls	Lyons Falls Ambulance 1, Request Oneida County to have Boonville Ambulance Stage one Rig at Port Leyden Fire Hall

Approved by the Lewis County EMS Council 11/21/06 and 6/15/10  
 Reviewed by Lewis County LEPC 11/27/06 and Fire Advisory on 12/20/06  
 Approved by the Lewis County 911 Oversight Committee on 1/25/07  
**Revised May 2010**

CARS 1 Ambulance	Constableville Ambulance 1 and Port Leyden Ambulance 1	Natural Bridge 1 Ambulance
Turin 1-2 Ambulances as needed	Request 2 <sup>nd</sup> Ambulance from CARS	Jefferson County Dispatch contacted for additional ambulances as needed

\* Level 3 Response requires SEMO and NYS DOH Notification

*Appendix 6-10*

**Carthage Rescue – Towns of Denmark and Croghan**

<b>Level 1 Response (3-6)</b>	<b>Level 2 Response (7-12)</b>	<b>Level 3 Response &gt; 12 patients</b>
CARS – 2 Ambulances	All of Level One	All of Level one and Two
LCSR – 2 Ambulances	Natural Bridge 1 Ambulance	Harrisville Rescue1 Ambulance
Beaver Falls 1 Ambulance	Lyons Falls Ambulance 1	Turin Ambulance toned for crew in Station locally
Croghan 1 Ambulance	Constableville Ambulance 1 and Port Leyden Ambulance 1	Jefferson County Dispatch contacted for additional ambulances as needed

\* Level 3 Response requires SEMO and NYS DOH Notification

**Constableville Ambulance**

<b>Level 1 Response (3-6)</b>	<b>Level 2 Response (7-12)</b>	<b>Level 3 Response &gt; 12 patients</b>
Constableville 1 Ambulance Turin 1-2 Ambulance	All of Level One	All of Level one and Two
West Leyden 1 Ambulance	LCSR 1 Ambulance	Boonville Ambulance 2 <sup>nd</sup> Rig
Lyons Falls 1 Ambulance	Boonville 1 Ambulance	ALS Rescue from LCSR and 2 <sup>nd</sup> Rig
Port Leyden toned to to cover local calls at station	Beaver Falls 1 Ambulance	Oneida County Dispatch contacted for additional ambulances as needed

\* Level 3 Response requires SEMO and NYS DOH Notification

**Croghan**

<b>Level 1 Response (3-6)</b>	<b>Level 2 Response (7-12)</b>	<b>Level 3 Response &gt; 12 patients</b>
Croghan 1 Ambulance Beaver Falls 1 Ambulance	All of Level One	All of Level one and Two
LCSR 1 Ambulance and ALS Rescue. Additionally one crew at Station to cover local calls	2 <sup>nd</sup> ambulance from LCSR if available, still one crew at station for local calls	Lyons Falls Ambulance 1, Request Oneida County to have Boonville Ambulance Stage one Rig at Port Leyden Fire Hall

Approved by the Lewis County EMS Council 11/21/06 and 6/15/10  
 Reviewed by Lewis County LEPC 11/27/06 and Fire Advisory on 12/20/06  
 Approved by the Lewis County 911 Oversight Committee on 1/25/07  
**Revised May 2010**

CARS 1 Ambulance	Constableville Ambulance 1 and Port Leyden Ambulance 1	Natural Bridge 1 Ambulance
Turin 1-2 Ambulances as needed	Request 2 <sup>nd</sup> Ambulance from CARS	Jefferson County Dispatch contacted for additional ambulances as needed

\* Level 3 Response requires SEMO and NYS DOH Notification

### *Appendix 6-11*

#### **Harrisville Rescue and Natural Bridge Ambulance**

<b>Level 1 Response (3-6)</b>	<b>Level 2 Response (7-12)</b>	<b>Level 3 Response &gt; 12 patients</b>
Harrisville 1 Ambulance Natural Bridge 1 Ambulance	All of Level One	All of Level one and Two
CARS 1 Ambulance and, additionally 2nd crew at Station to cover local calls	2 <sup>nd</sup> ambulance from CARS if available, still one crew at station for local calls	Star Lake 1 Ambulance
Croghan 1 Ambulance	Edwards 1 Ambulance	Fort Drum 1 Ambulance
Governuer 1-2 Ambulances as needed	LCSR 1 Ambulance	St. Lawrence County Dispatch contacted for additional ambulances as needed

\* Level 3 Response requires SEMO and NYS DOH Notification

#### **LCSR Towns of Denmark, Harrisburg, Pinckney, & Montague**

<b>Level 1 Response (3-6)</b>	<b>Level 2 Response (7-12)</b>	<b>Level 3 Response &gt; 12 patients</b>
LCSR – 3 Ambulances	All of Level One	All of Level one and Two
Beaver Falls toned for crew at Station to cover local calls	2 <sup>nd</sup> ambulance from Carthage if available	South Jefferson Rescue 1 Ambulance, Turin Ambulance toned for crew in Station locally
Croghan 1 Ambulance	Lyons Falls Ambulance 1	Natural Bridge Ambulance 1
Carthage 1 Ambulances as needed	Constableville Ambulance 1 and Port Leyden Ambulance 1	Jefferson County Dispatch contacted for additional ambulances as needed

\* Level 3 Response requires SEMO and NYS DOH Notification

#### **LCSR Towns of Lowville, Watson, Martinsburg, and Greig**

<b>Level 1 Response (3-6)</b>	<b>Level 2 Response (7-12)</b>	<b>Level 3 Response &gt; 12 patients</b>
LCSR – 3 Ambulances	All of Level One	All of Level one and Two
Beaver Falls toned for crew at Station to cover	Turin 1 Ambulance	Port Leyden 1 Ambulance, Request Oneida County to have

Approved by the Lewis County EMS Council 11/21/06 and 6/15/10  
 Reviewed by Lewis County LEPC 11/27/06 and Fire Advisory on 12/20/06  
 Approved by the Lewis County 911 Oversight Committee on 1/25/07  
**Revised May 2010**

local calls		Boonville Ambulance Stage one Rig at Port Leyden Fire Hall
Croghan 1 Ambulance	Constableville 1 Ambulance	South Jefferson Rescue Ambulance 1
Lyons Falls 1 Ambulance	Carthage 1 Ambulance	Jefferson County Dispatch contacted for additional ambulances as needed

\* Level 3 Response requires SEMO and NYS DOH Notification

### *Appendix 6-12*

#### **Lyons Falls Ambulance**

<b>Level 1 Response (3-6)</b>	<b>Level 2 Response (7-12)</b>	<b>Level 3 Response &gt; 12 patients</b>
Lyons Falls Ambulance 1 Turin Ambulances (2)	All of Level One	All of Level one and Two
LCSR 1 Ambulance, 2 <sup>nd</sup> rig toned to stand by at station for local calls	Beaver Falls Ambulance	Boonville Ambulance 2 <sup>nd</sup> Rig
Port Leyden 1 Ambulance	West Leyden 1 Ambulance	ALS Rescue from LCSR
Constableville 1 Ambulance	Boonville 1 Ambulance	Oneida County Dispatch contacted for additional ambulances as needed

\* Level 3 Response requires SEMO and NYS DOH Notification

#### **Port Leyden and Boonville Ambulance**

<b>Level 1 Response (3-6)</b>	<b>Level 2 Response (7-12)</b>	<b>Level 3 Response &gt; 12 patients</b>
Port Leyden 1 Ambulance Lyons Falls 1 Ambulance	All of Level One	All of Level one and Two
Turin 1-2 Ambulance	Constableville 1 Ambulance	Boonville Ambulance 2 <sup>nd</sup> Rig
LCSR 1 Ambulance, 2 <sup>nd</sup> rig toned to stand by at station for local calls	Beaver Falls Ambulance	ALS Rescue from LCSR
Boonville 1 Ambulance	West Leyden 1 Ambulance	Oneida County Dispatch contacted for additional ambulances as needed

\* Level 3 Response requires SEMO and NYS DOH Notification

#### **Turin Ambulance**

<b>Level 1 Response (3-6)</b>	<b>Level 2 Response (7-12)</b>	<b>Level 3 Response &gt; 12 patients</b>
Turin Ambulances Lyons Falls 1 Ambulance	All of Level One	All of Level one and Two

Approved by the Lewis County EMS Council 11/21/06 and 6/15/10  
 Reviewed by Lewis County LEPC 11/27/06 and Fire Advisory on 12/20/06  
 Approved by the Lewis County 911 Oversight Committee on 1/25/07  
**Revised May 2010**

LCSR 1 Ambulance, 2 <sup>nd</sup> rig toned to stand by at station for local calls	Beaver Falls Ambulance	Boonville Ambulance 2 <sup>nd</sup> Rig
Port Leyden 1 Ambulance	West Leyden 1 Ambulance	2 <sup>nd</sup> Ambulance and ALS Rescue from LCSR
Constableville 1 Ambulance	Boonville 1 Ambulance	Oneida County Dispatch contacted for additional ambulances as needed

\* Level 3 Response requires SEMO and NYS DOH Notification for State Resources

### *Appendix 6-13*

#### **West Leyden Ambulance**

<b>Level 1 Response (3-6)</b>	<b>Level 2 Response (7-12)</b>	<b>Level 3 Response &gt; 12 patients</b>
West Leyden 1 Ambulance Constableville 1 Ambulance	All of Level One	All of Level one and Two
Am Care 1 Ambulance	Boonville 1 Ambulance	LCSR 1 Ambulance
Turin 1 Ambulance	Lyons Falls 1 Ambulance	2 <sup>nd</sup> Ambulance from Boonville
Port Leyden toned to cover local calls at station	AmCare2nd Ambulance	Oneida County Dispatch contacted for additional ambulances as needed

\* Level 3 Response requires SEMO and NYS DOH Notification

**NOTE:** An MCI in the Town of Osceola is not covered by this plan, as their primary response will be from Camden Ambulance in Oneida County and Red Field Fire Department and First Responders. Red Field Fire Department will follow their MCI procedures.

#### **Mass Fatalities:**

In the event of Mass Fatalities, the Lewis County Coroner's office in conjunction with Lewis County Public Health will enact their plans, policies, and procedures.

**\* If an ambulance service isn't available then it is intended that the dispatcher will automatically move down the plan chronologically until enough ambulances are dispatched.**

Approved by the Lewis County EMS Council 11/21/06 and 6/15/10  
Reviewed by Lewis County LEPC 11/27/06 and Fire Advisory on 12/20/06  
Approved by the Lewis County 911 Oversight Committee on 1/25/07  
**Revised May 2010**

**\*\* See MCI Tactical Worksheet**

*MT/mt 11/06*