



Facilities Master Plan & CARC Presentation

9 February 2007



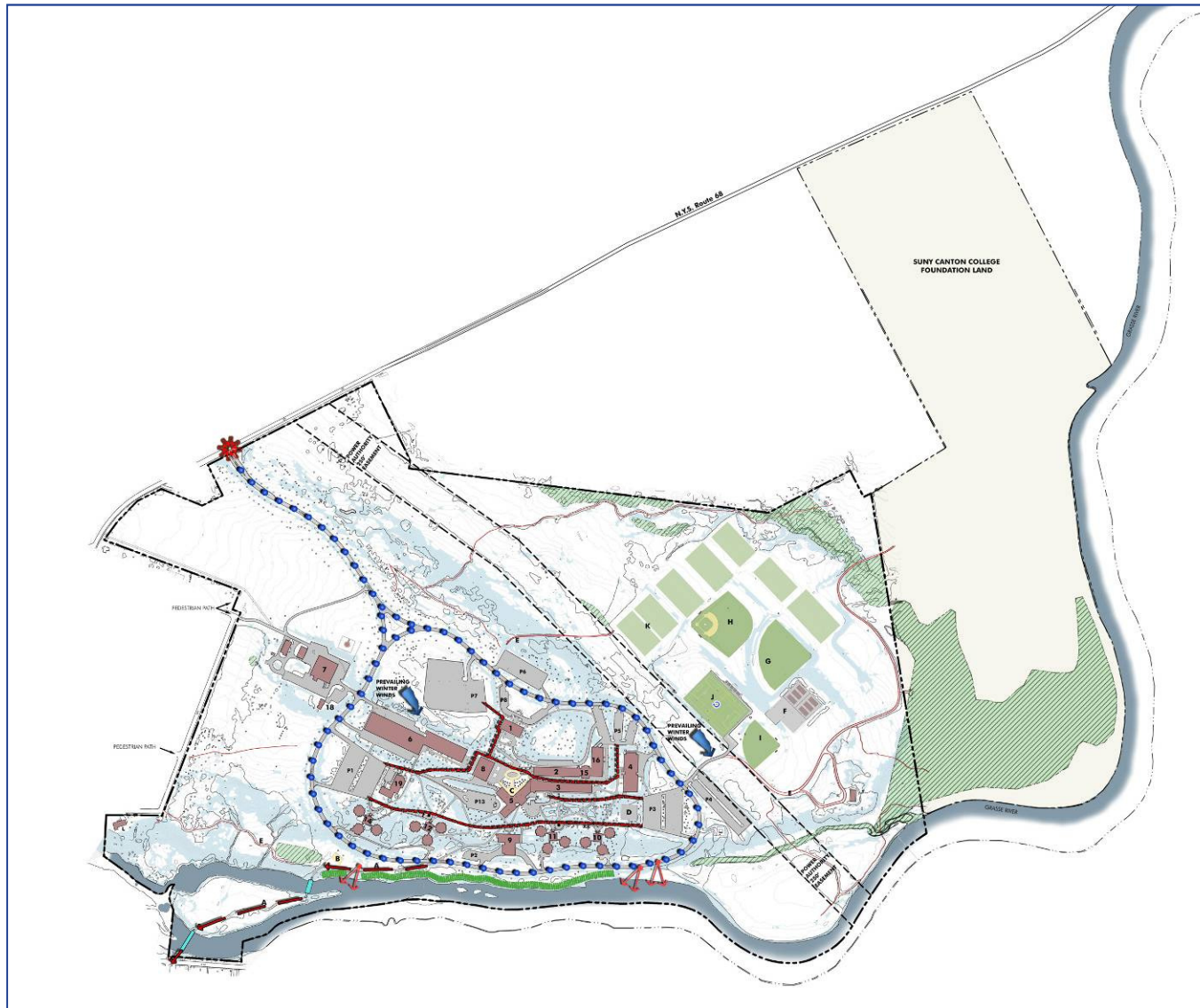


Site Concepts



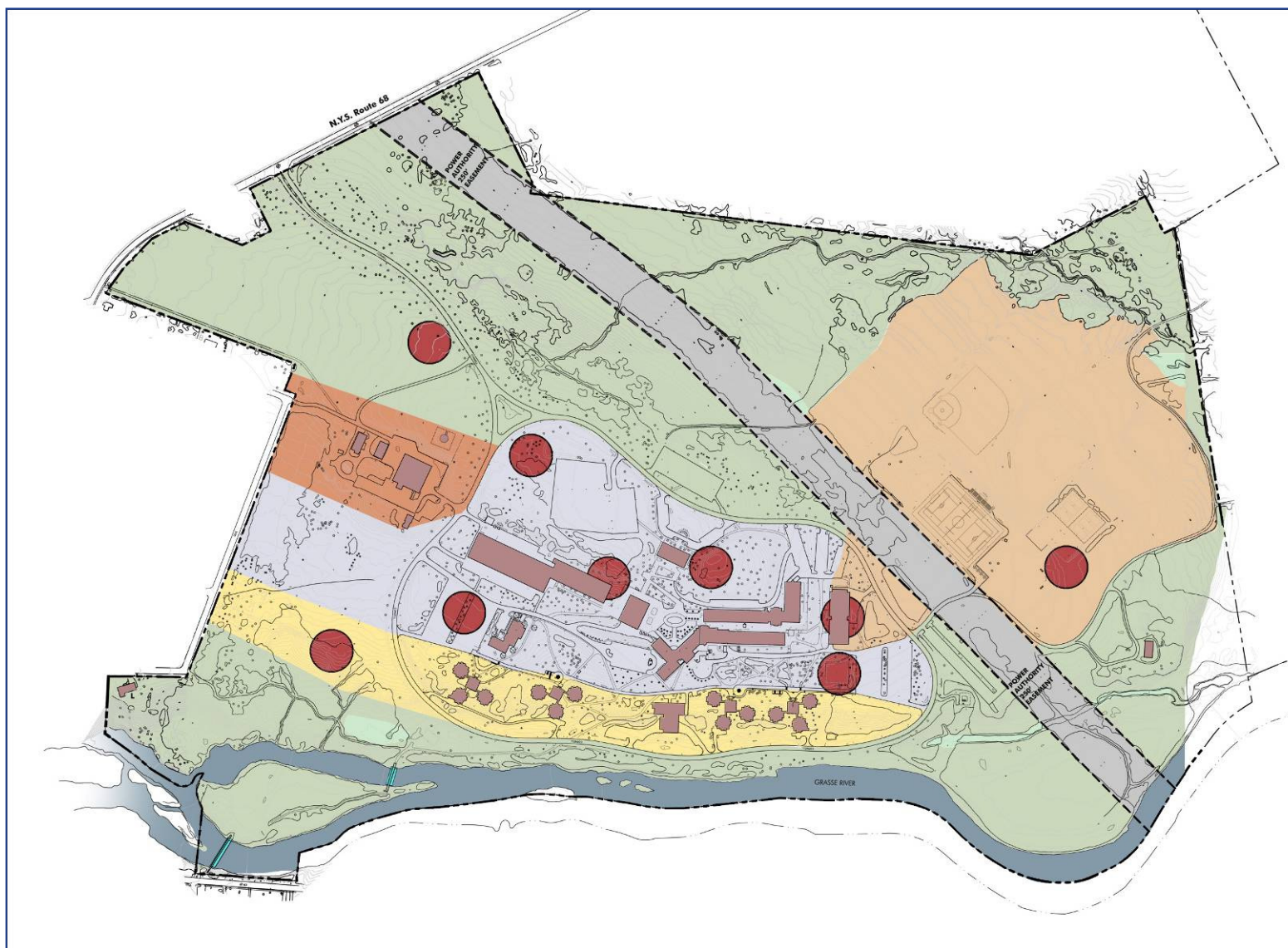


Site Analysis





Zoning Diagram





Existing Site





Changes to Entrance Drive





Nature Trails





Existing Power Lines





Relocated Power Lines





Emergency Vehicle Operations Course





Salt Shed





Convocation/Athletic/ Recreation Center





Oswego Ice Arena





Skaneateles Community Recreational Center





Skaneateles Community Recreational Center





CARC Space Program

Component	Description	Area NASF	Count	Total Area NASF	Total Area GSF	Cost/ SF	Total Cost
Ice Arena							
Ice Rink		27,520	1	27,520			
Refrigeration Room		1,891	1	1,891			
Zamboni Room		583	1	583			
Storage		1,150	1	1,150			
Seating	978 seats at \$250/seat	NA	NA	NA			\$244,500
Lobby		2,373	1	2,373			
Men's Varsity Hockey Locker Room	30 Lockers, Stick Storage, Toilets, Showers	1,210	1	1,210			
Women's Varsity Hockey Locker Room	24 Lockers, Stick Storage, Toilets, Showers	1,210	1	1,210			
Visitor Locker Rooms	Changing Area, Toilets, Showers	522	2	1,044			
Visitor Locker Rooms	Changing Area, Toilets, Showers	584	2	1,168			
Referee Locker Rooms	Changing Area, Toilets, Showers	127	2	254			
Men's Hockey Coach Office	Office, Changing Area, Toilet, Shower	340	1	340			
Women's Hockey Coach Office	Office, Changing Area, Toilet, Shower	293	1	293			
Hockey Storage		325	2	650			
Laundry Room / Uniform Storage		194	1	194			
Pro Shop		314	1	314			
Training Room		739	1	739			
Weight Room		770	1	770			
Loading Dock		436	1	436			
Janitor's Closet		33	1	33			
Elevator Machine Room		115	1	115			
Electrical Closet		47	1	47			
Data Closet		47	1	47			
Entrance Lobby		2,138	1	2,138			
Concourse		3,152	1	3,152			
Press Box		210	1	210			
Camera Platforms		68	2	136			
Ticket Booth		189	1	189			
Building Manager		148	1	148			
Concessions		211	1	211			
Concessions Seating		550	1	550			
Concessions Storage		168	1	168			
Viewing Area / Hospitality Room		1,374	1	1,374			
VIP Room		345	1	345			
Multi-Purpose Room		420	2	840			
Men's Room		488	1	488			
Women's Room		1,016	1	1,016			
Mechanical Room		1,339	1	1,339			
Janitor's Closet		60	1	60			
Data Closet		60	1	60			
Subtotal				54,805	63,534	\$200	\$12,951,300



CARC Space Program

Component	Description	Area NASF	Count	Total Area NASF	Total Area GSF	Cost/ SF	Total Cost
Athletic Offices and Support Space							
Varsity Locker Rooms	25 Players, Changing Area, Toilets, Showers	662	4	2,648			
Reception / Information		343	1	343			
Athletic Director's Office		209	1	209			
Assistant Athletic Director's Office		132	1	132			
Sports Information Director's Office		197	1	197			
Coaches Offices		132	4	528			
Men's Room	Changing Area, Toilets, Showers	181	1	181			
Women's Room	Changing Area, Toilets, Showers	181	1	181			
Kitchen Area		135	1	135			
Conference Room		281	1	281			
Adjuncts' Office		246	1	246			
Photo Room		80	1	80			
Student Sports Information Office		80	1	80			
Storage Room		194	1	194			
Subtotal				5,435	7,732	\$200	\$1,546,400
Field House							
Field House		22,450	1	22,450			
Subtotal				22,450	23,098	\$175	\$4,042,150
GRAND TOTAL				82,690	94,364		\$18,539,850

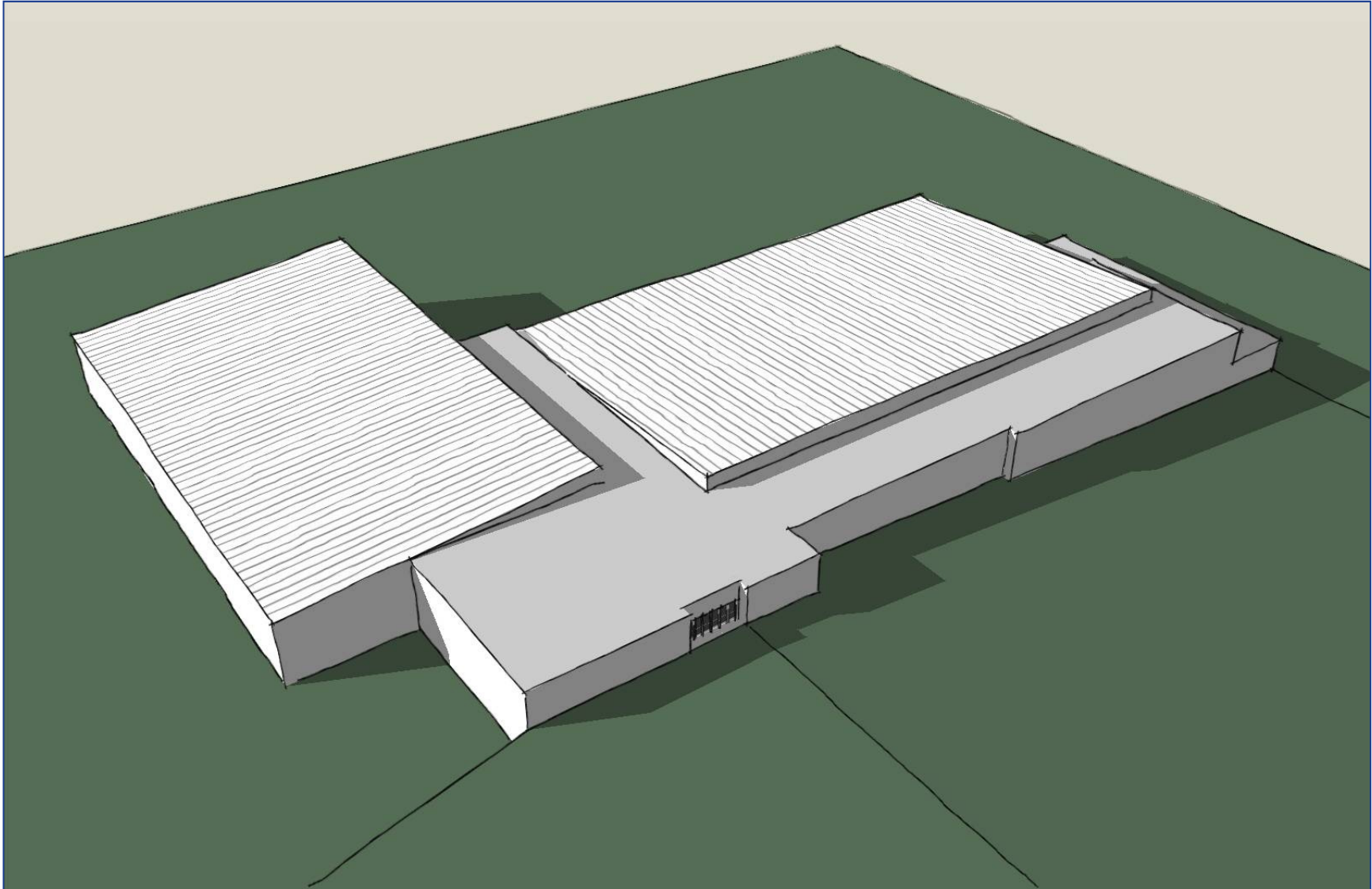
*Seating requires 14'-0" floor to floor.

**Location of downstairs corridor allows for 9'-2" to underside of seating.

***Aisle width allows for a maximum of 34 seats per row.

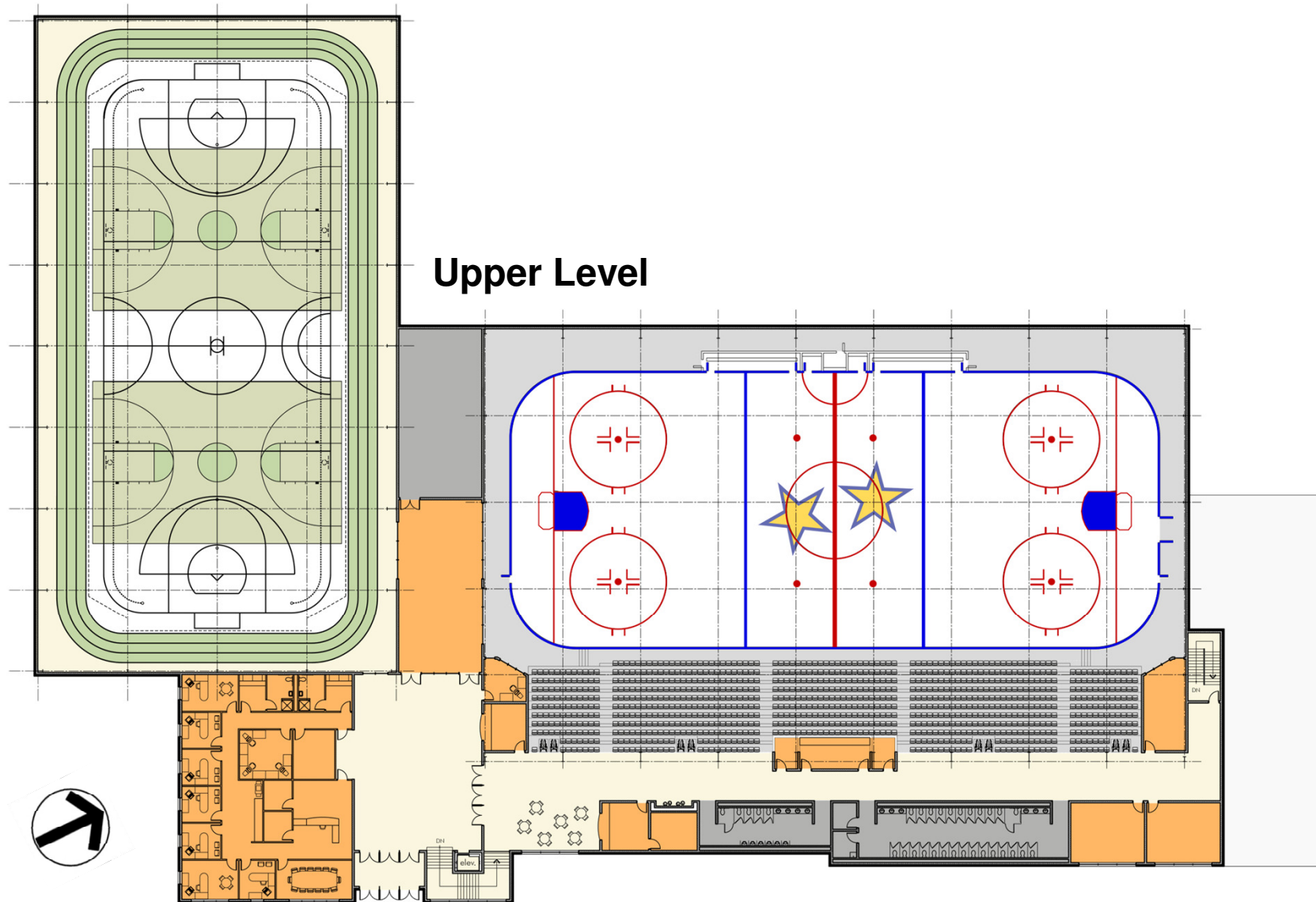


Convocation/Athletic/Recreation Center



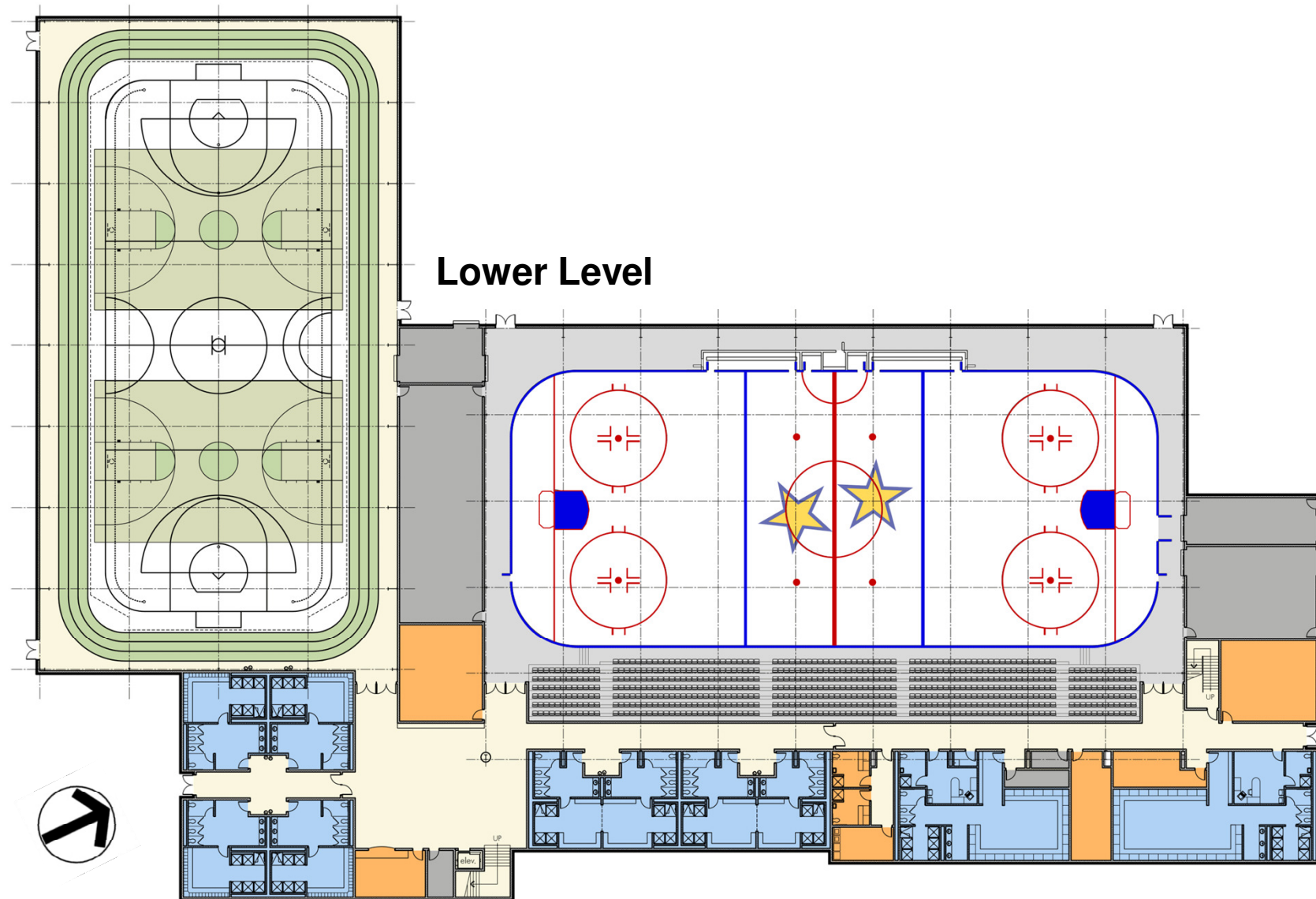


Convocation/Athletic/Recreation Center





Convocation/Athletic/Recreation Center





Convocation/Athletic/Recreation Center





Convocation/Athletic/Recreation Center





Convocation/Athletic/Recreation Center





Convocation/Athletic/Recreation Center



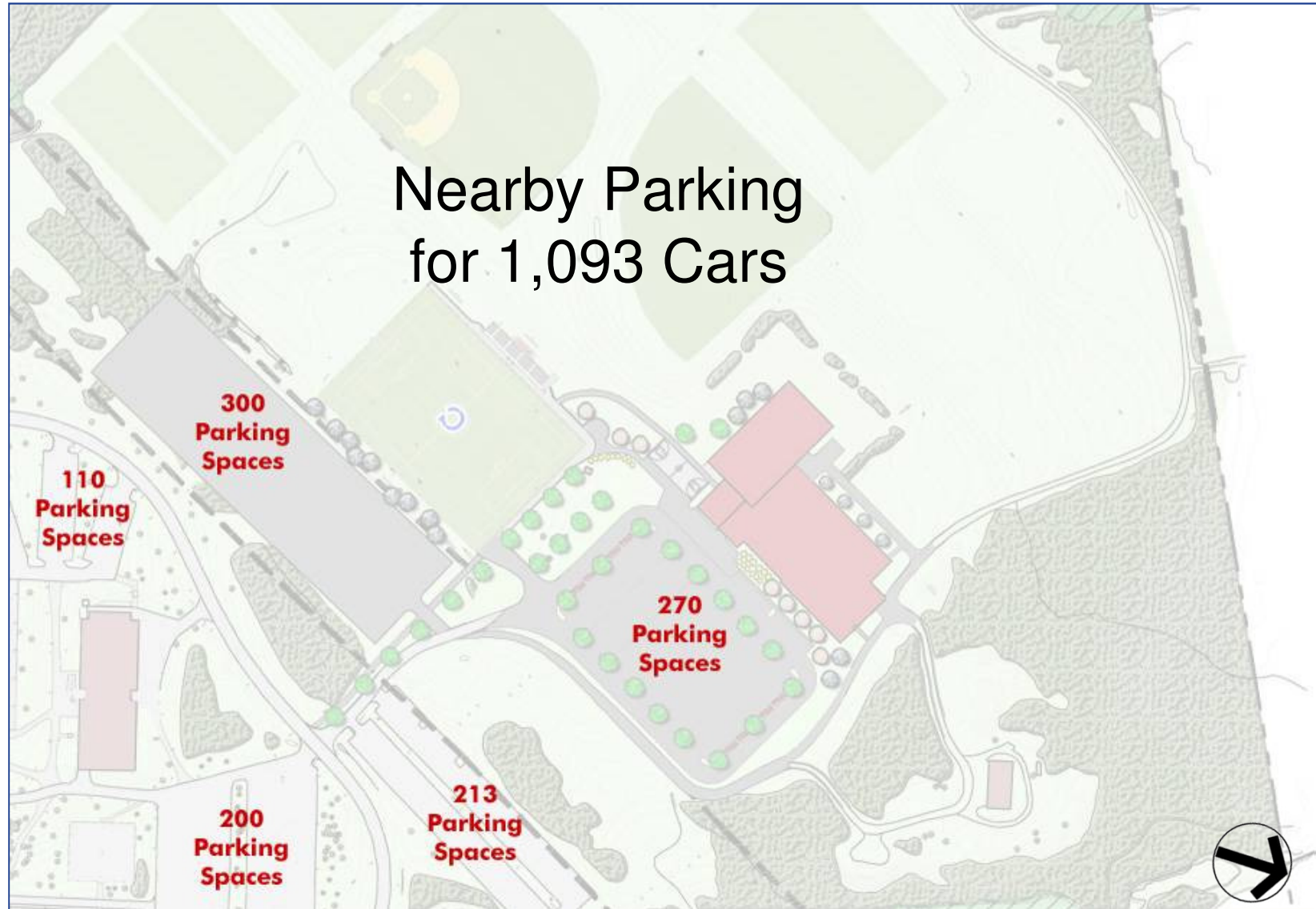


Convocation/Athletic/Recreation Center





Convocation/Athletic/Recreation Center





Dana Hall





Dana Hall Expansion

Dana Hall Expansion	Room Description	Preliminary Program			
		NASF	Count	Total NASF	GSF
Existing Space		30,892	1	30,892	39,268
New Front Entry		300	1	300	390
Staff Offices	Move existing administration and all but basketball and volleyball coaches to CARC. (Space to be reconfigured for offices, classroom space, multipurpose space, coaches'/ official's locker rooms)			(3,500)	(4,445)
Multipurpose Space	For exercise classes (i.e. yoga)	600	2	1,200	1,524
Classroom		600	2	1,200	1,524
Coaches' Offices		120	2	240	305
Coaches'/ Official's Locker Rooms		140	2	280	356
Assistant Coaches' Office	Shared space	140	1	140	182
Women's Volleyball Locker Room		1,000	1	1,000	1,300
Men's Volleyball Locker Room		1,000	1	1,000	1,300
Women's Basketball Locker Room		1,000	1	1,000	1,300
Men's Basketball Locker Room		1,000	1	1,000	1,300
Visitor Locker Rooms		400	2	800	1,040
Total		37,192		35,552	45,343

Total Need GSF (Efficiency Factor 1.3) 45,343

Existing Dana Hall GSF 39,268

Addition GSF 6,000



Dana Hall





Dana Hall





Enrollment and Space Projections





Enrollment Projections

Student Group	Fall 2004 (Actual)	Fall 2005 (Official)	Fall 2010 (per MOU)	Projected Growth
First-Time Full-Time	760	799	760	0.0%
Transfer Full-Time	171	180	300	175.4%
Continuing/Returning Full-Time	1,124	1,102	1,605	142.8%
Total Full-Time Students	2,055	2,081	2,665	129.7%
Baccalaureate Enrollment	276	312	1,139	412.7%
Baccalaureate Online FTEs	50	55	384	768.0%
Total Part-Time	463	400	550	118.8%
Total Headcount	2,518	2,481	3,215	127.7%
AAFTE	2097	2,128	2,699	128.7%



Summary of Existing Space Versus Calculated Space

		Fall 2004 - 2,239 FTE			Fall 2008* 2,543 FTE		Fall 2010* 2,699 FTE		3,200 FTE**	
	Space Type	Existing Space	Required Space	(Deficit)/ Surplus	Required Space	(Deficit)/ Surplus	Required Space	(Deficit)/ Surplus	Required Space	(Deficit)/ Surplus
01	Classroom, Lecture	34,216	19,329	14,887						
02	Class Lab	82,818	28,696	54,122						
	Individual Study Lab	1,080	1,590	(510)						
	Research	2740	7,782	(5,042)						
	Departmental Office	20,080	16,669	3,411						
	General & Special Use	1092	4,201	(3,109)						
	Subtotal, Instructional / Dept. Research	142,026	78,267	63,759	88,894	53,132	94,347	47,679	111,860	30,166
03	Health & Physical Education	0	44,168	(44,168)	44,168	(44,168)	44,168	(44,168)	60,000	(60,000)
04	Electronic Data Processing	3,227	4,545	(1,318)	4,545	(1,318)	4,545	(1,318)	5,310	(2,083)
05	Instructional Resources	121	6,885	(6,764)	6,885	(6,764)	6,885	(6,764)	8,295	(8,174)
06	Organized Activity	0	0	0	0	0	0	0	0	0
07	Organized Research	0	0	0	0	0	0	0	0	0
08	Public Service	3,779	3,779	0	3,779	0	3,779	0	3,779	0
09	Assembly & Exhibition	4,490	11,120	(6,630)	11,120	(6,630)	11,120	(6,630)	11,120	(6,630)
10	Library	22,679	19,203	3,476	21,817	862	23,157	(478)	27,456	(4,777)
11	Student/ Faculty Activity	59,457	23,508	35,949	26,702	32,755	28,340	31,118	33,600	25,857
12	Student Health Services	2999	2999	0	2,999	0	4,800	(1,801)	4,800	(1,801)
13	General Administration	28,767	17,911	10,856	20,344	8,423	21,592	7,175	25,600	3,167
14	Central Services	30,320	22,080	8,240	22,080	8,240	22,080	8,240	23,920	6,400
15	Building Services	6,336	7,034	(698)	7,600	(1,264)	7,944	(1,608)	9,472	(3,136)
16	Inactive Space	3,116	0	3,116	0	3,116	0	3,116	0	3,116
	Subtotal, Support	165,291	163,232	2,059	172,039	(6,748)	178,410	(13,119)	213,352	(48,061)
	Total, Academic Space	307,317	241,499	65,818	260,933	46,384	272,757	34,560	325,212	(17,895)

* Per SUNY Canton MOU, dated May 2006

** College's Fall 2010 Aspiration Goal per Page 22 of MOU



Classroom Utilization





Instructional Space Data

Classrooms					
Building	Room Number	Room Use	SF	Stations	SF/ Station
Cook Hall	102	General Classroom	680	42	16.2
	206	Smart Classroom	621	37	16.8
Subtotal			1,301	79	16.5
Nevaldine Hall North	113	General Classroom	428	18	23.8
	115	Smart Classroom	747	32	23.3
Subtotal			1,175	50	23.5
Payson Hall	109	Smart Classroom	725	45	16.1
	111	General Classroom - Police Academy	937	34	27.6
	201	Distance Learning Room	698	19	36.7
	202	General Classroom	460	27	17.0
	205	Smart Expression 503	935	50	18.7
	206	General Classroom	673	42	16.0
	209	General Classroom	672	42	16.0
	211	Smart Classroom	672	42	16.0
	212	Smart Classroom	1,100	65	16.9
	213	General Classroom	672	42	16.0
	214	General Classroom	673	42	16.0
	215	General Classroom	672	42	16.0
	216	General Classroom	445	28	15.9
	218	General Classroom	458	28	16.4
Subtotal			9,792	548	17.9



Instructional Space Data

Classrooms					
Building	Room Number	Room Use	SF	Stations	SF/ Station
Veterinary Science	107	Smart Enhanced Classroom	400	25	16.0
	109	Smart Enhanced Classroom	800	50	16.0
Subtotal			1,200	75	16.0
Wicks Hall	006	Computer Classroom 40 Seats	1,490	40	37.3
	008	Computer Classroom 30 Seats	1,100	30	36.7
	105	General Classroom	714	41	17.4
	109	General Classroom	714	40	17.9
	113	General Classroom	714	40	17.9
	117	General Classroom	714	40	17.9
	202	Smart Classroom	900	45	20.0
	204	Smart Classroom	922	45	20.5
	206	Smart Classroom	1,090	48	22.7
	208	Smart Classroom	1,020	48	21.3
Subtotal			9,378	417	22.5
Subtotal Classrooms			22,846	1,169	19.5
Lecture Halls					
Nevaldine Hall North	102	Lecture Hall - Smart Enhanced	1674	110	15.2
Payson Hall	219	Lecture Hall - Smart Enhanced	1355	84	16.1
Wicks Hall	102	Lecture Hall - Smart Enhanced	1873	124	15.1
Subtotal Lecture Halls			4,902	318	15.4
Grand Totals			27,748	1,487	18.7





Classroom Utilization

		C		P														
		Cook		Payson Hall														
		Classroom	Classroom	Classroom	Classroom	DL Classroom	Classroom	Classroom	Classroom	Classroom	Classroom	Classroom	Classroom	Classroom	Classroom	Classroom	Classroom	Lecture Hall
Room Number		102	206	109	111	201	202	205	206	209	211	212	213	214	215	216	218	219
Room Area		680	621	725	937	698	460	935	673	672	672	1,100	672	673	672	445	458	1,355
Existing Seat Capacity		42	37	45	34	19	27	50	42	42	42	65	42	42	42	28	28	84
Existing SF/Station		16.2	16.8	16.1	27.6	36.7	17.0	18.7	16.0	16.0	16.0	16.9	16.0	16.0	16.0	15.9	16.4	16.1
*Right-Sized Seat Capacity		27	25	29	37	28	18	37	27	27	27	44	27	27	27	18	18	84
MONDAY	7:00																	
	8:00			26	17				29		25		23	36			28	
	9:00	24	19	38			24	34			25	46	43	23	26			39
	10:00	24	24	32			18	24	32	28		26		40	35	41		
	11:00	11		40		49	26	36	38	43	10			34		22		69
	12:00			30	28	23	29	37	45	44	27		31	31	40	25	28	55
	1:00	12	27	41	21	23		37	25		32	38	33	34	27		23	32
	2:00		16	25				34		35	26	24	25	33			27	69
	3:00	19		1				16		24				27			23	
	4:00																	
	5:00											44						



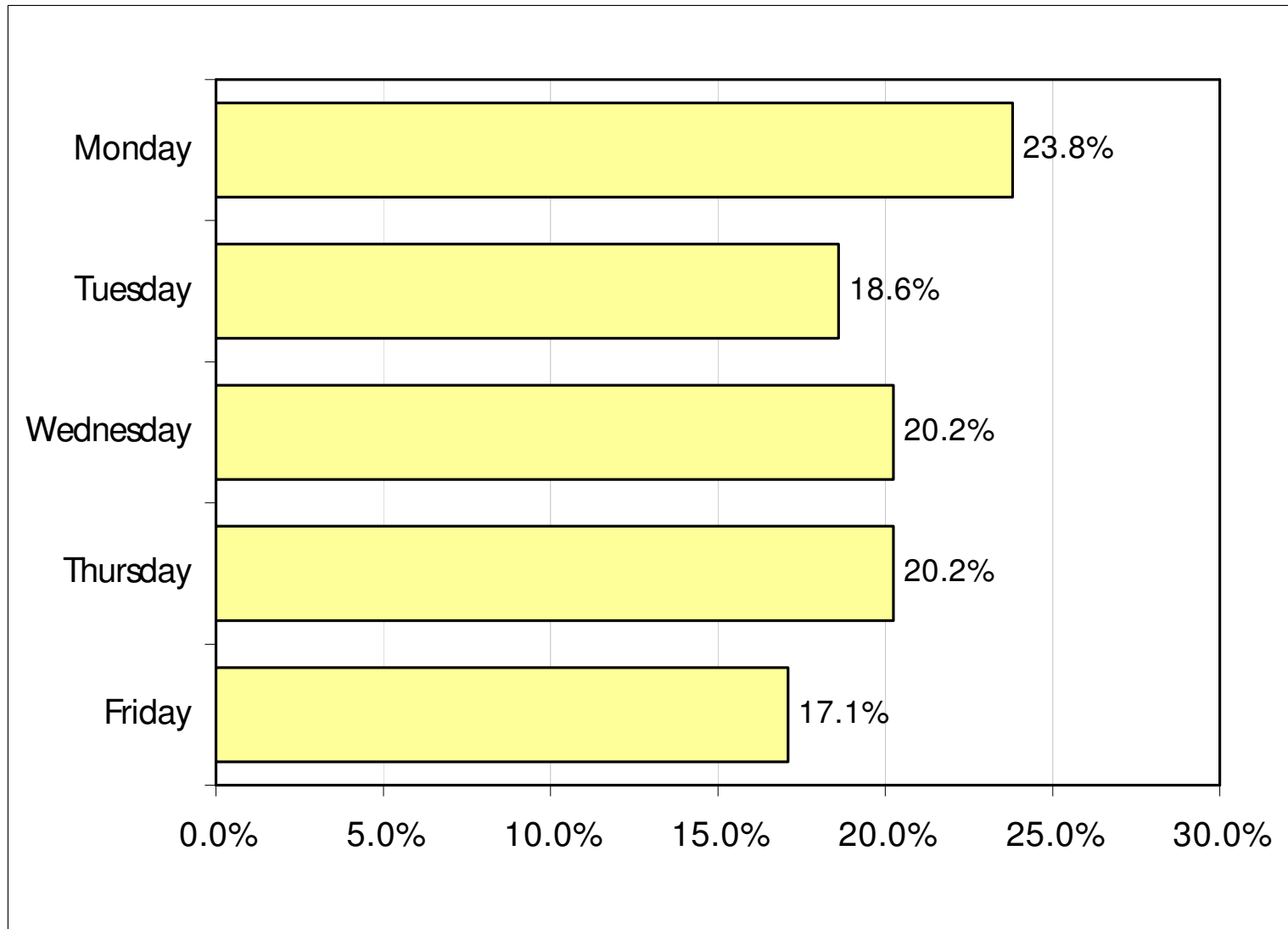
Classroom Course Distribution by Day of Week

Day	Daytime Courses	Percent
Monday	11	3.7%
Tuesday	13	4.4%
Wednesday	10	3.4%
Thursday	11	3.7%
Friday	3	1.0%
MT	2	0.7%
MW	12	4.0%
MR	3	1.0%
MF	4	1.3%
TR	68	22.8%
TF	4	1.3%
WF	10	3.4%
MTR	24	8.1%
MTF	2	0.7%
MPF	1	0.3%
MWR	11	3.7%
MWF	76	25.5%
TRF	4	1.3%
TWR	1	0.3%
MTWR	7	2.3%
MTWF	3	1.0%
MWRF	10	3.4%
MTWRF	8	2.7%
Total	298	100.0%

- 16% of courses meet only one day per week
- 48% follow the “traditional” scheduling format:
Monday/Wednesday/Friday
or Tuesday/Thursday
- 36% of courses are scheduled on 16 different day-of-the-week combinations

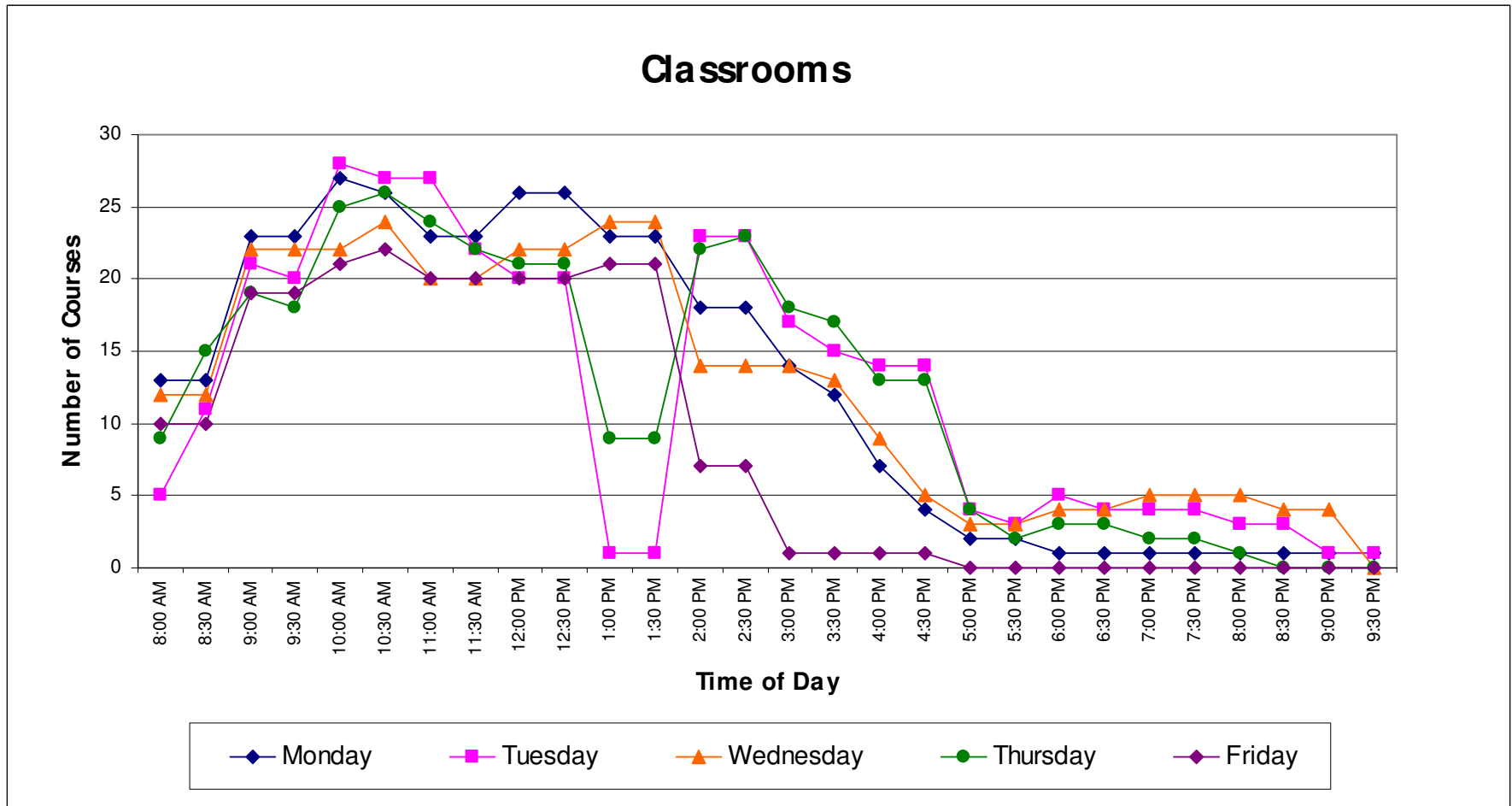


Percent of Course Meetings by Day of Week





Distribution of Courses by Day and Time



Classroom Use by Number of Hours

Classroom Usage Hours			
Hours in use/ week		No. of Classrooms	
11-15	Hours	2	} 60%
16-20	Hours	8	
21-25	Hours	8	
26-30	Hours	3	} 30%
31-35	Hours	6	
36-40	Hours	3	10%

Lecture Hall Usage Hours			
Hours in use/ week		No. of Lecture Halls	
11-15	Hours	0	} 67%
16-20	Hours	1	
21-25	Hours	1	
26-30	Hours	0	} 33%
31-35	Hours	1	

Classrooms (30)

- SUNY classroom utilization target: 75% of 40 hours = 30 hours
 - 30% of classrooms scheduled within range of target
 - 60% are underutilized
 - 10% are over scheduled
- ## Lecture Halls (3)
- Wicks 102 – 82% utilization
 - Payson 219 – 48% utilization
 - Nevaldine 102 – 61% utilization



French Hall and the Center for Global Learning





French Hall Expansion

		Preliminary Program			
French Hall Expansion	Room Description	NASF	Count	Total NASF	GSF (Efficiency Factor of 1.65)
Center for Global Learning					
Reception/ Information Desk		100	1	100	
Entry Lobby		250	1	250	
Video Conferencing		700	1	700	
Video Conferencing		450	1	450	
Multi-Media Studio		650	1	650	
Video Editing Room		120	2	240	
Center for Online Learning Offices		120	4	480	
Offices for Visitors		120	3	360	
Virtual Team Work Rooms		180	2	360	
Tiered Classroom	Forum-type lecture hall with 70-80 seats	1,700	1	1,700	
Classrooms	General classrooms for up to 60	1,500	2	3,000	
Conference Room		600	1	600	
Conference Room		400	1	400	
Kitchenette		50	1	50	
	Subtotal	6,940		9,340	15,411
One-Stop Student Services Center					
Admissions	Existing NASF	3,890	1	3,890	
Additional space	Files and workroom	400	1	400	
Registrar	Existing NASF	1,600	1	1,600	
Additional space	Files, workroom and improved accessibility	500	1	500	
Student Accounts/ Financial Aid	Existing NASF (needs to be verified)	3,100	1	3,100	
Office	Two future staff; additional counter area	440	1	440	
	Subtotal	9,930		9,930	16,385



French Hall Expansion

		Preliminary Program			
French Hall Expansion	Room Description	NASF	Count	Total NASF	GSF (Efficiency Factor of 1.65)
Other French Hall Occupants/ Spaces					
Career Services	Existing NASF	437	1	437	
HR/ Payroll/ Benefits	Existing NASF	1,561	1	1,561	
Development/ Alumni/ Foundation	Existing NASF	1,101	1	1,101	
Conference Room	Existing NASF	275	1	275	
Kitchenette	Existing NASF	36	1	36	
	Subtotal	3,410		3,410	5,627
Public Service					
Continuing Education	Administrative Functions	950	1	950	1,568
Small Business Development	Currently in FOB	1,936	1	1,936	3,194
Public Service Groups	Currently in FOB	543	1	543	896
	Subtotal	3,429		3,429	5,658
	Total	23,709		26,109	43,080

Total Need GSF (Efficiency Factor 1.65) 43,080

Existing French Hall GSF 20,700

Addition GSF 25,000



French Hall



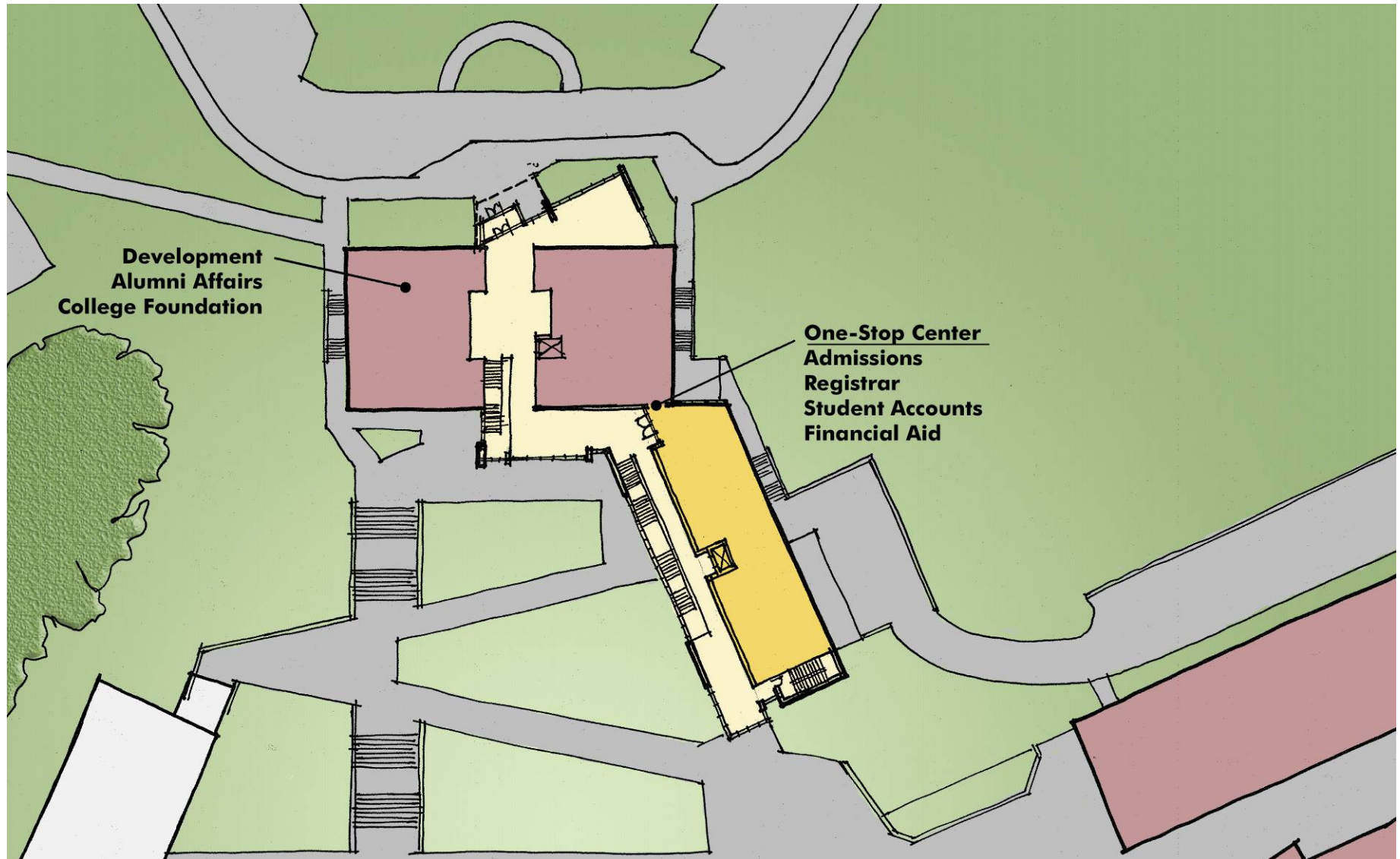


French Hall Expansion



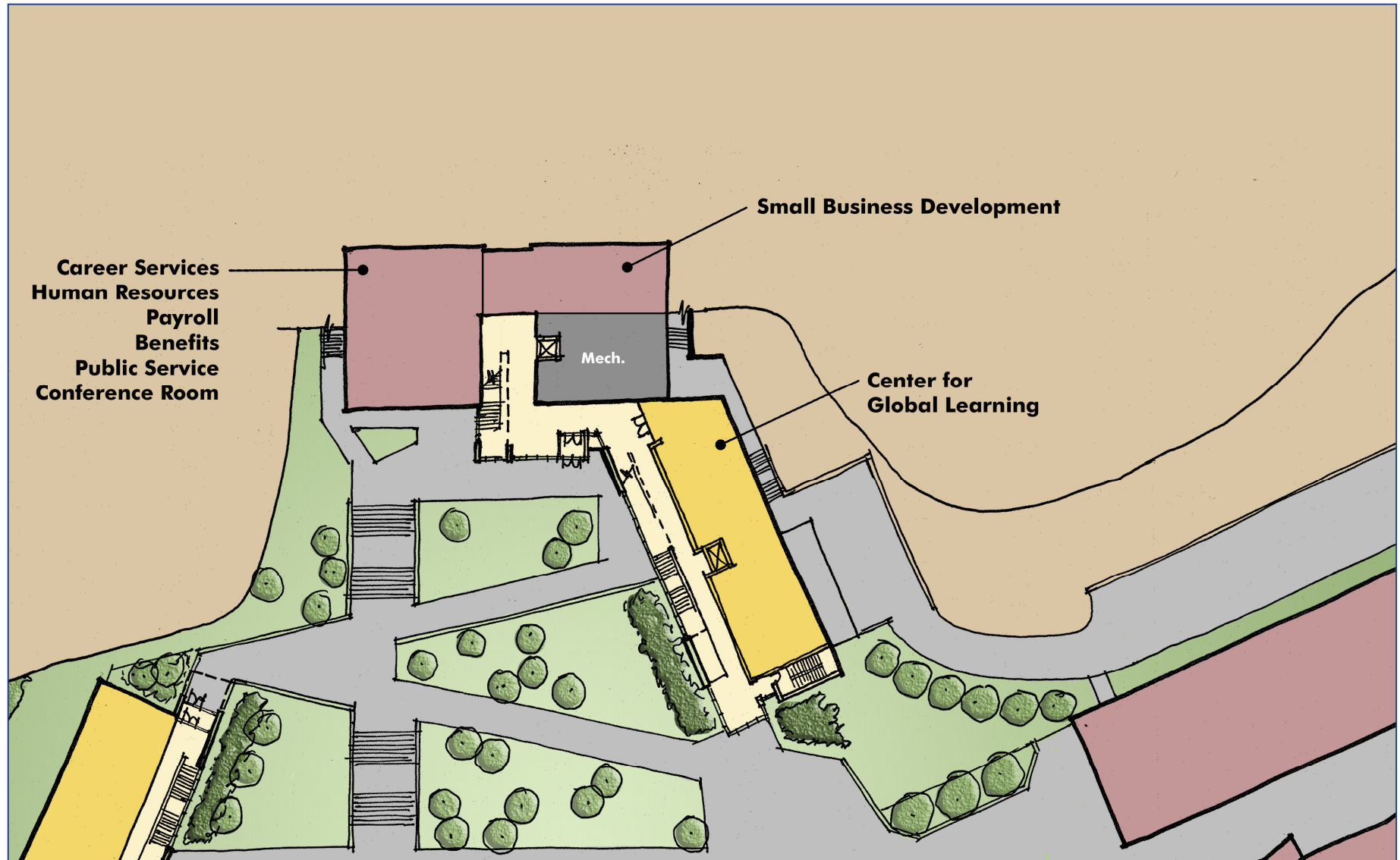


French Hall – Upper Level



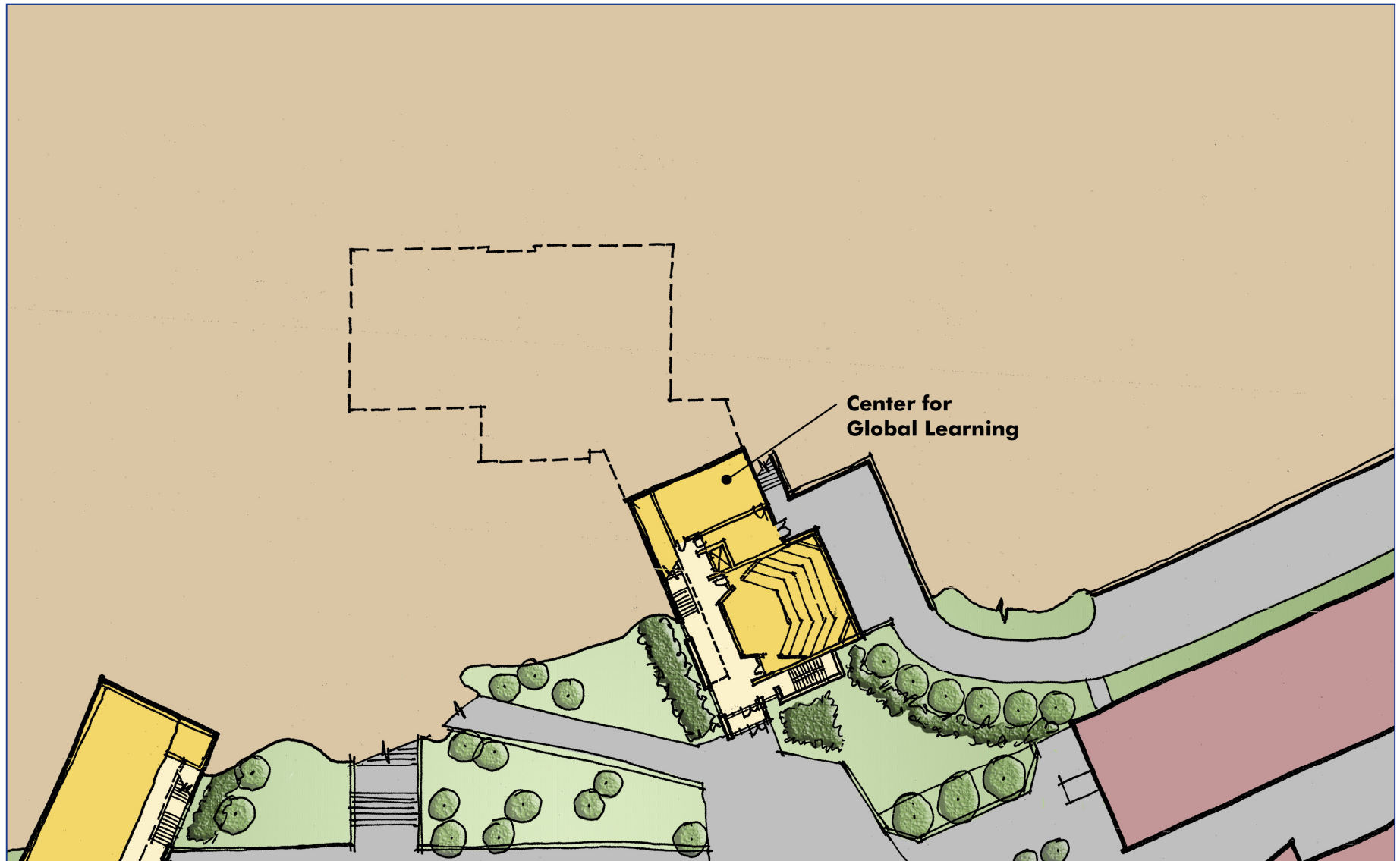


French Hall – Middle Level





French Hall – Plaza Level





Forum





Nevaldine Hall





Nevaldine Hall Expansion

Nevaldine Hall Expansion	Preliminary Program		
	Existing Space Fall 2003 NASF	Need Fall 2008 NASF	Projected Deficit or Surplus NASF
Shared Academic & Support Space			
Classrooms (Required for SOET)	1,118	3,150	(2,032)
Large Lecture Rooms	1,664	4,464	(2,800)
Drafting & CAD Facilities	4,259	3,900	359
Café	126	300	(174)
Student Organizations	0	450	(450)
Student Lounge Space	0	1,800	(1,800)
Faculty Lounge Space	183	300	(117)
School of Engineering Technologies Learning Center	297	1,500	(1,203)
Administrative Functions (Dean's Office)	2,582	3,000	(418)
Campus Services	1,601	1,800	(199)
Subtotal	11,830	20,664	(8,834)
Academic Disciplines			
Alternative Energy	0	0	0
Automotive Technologies	10,089	17,080	(6,991)
Construction Technologies	12,065	9,090	2,975
Electrical Engineering	11,605	5,700	5,905
Heating, Ventilation & Air Conditioning	8,036	7,320	716
Mechanical & Manufacturing Technologies	7,683	5,400	2,283
Physics	3,704	1,960	1,744
Subtotal	53,182	46,550	6,632
Total New Assignable Square Feet (NASF)	65,012	67,214	(2,202)
Contingency (5%)		3,408	
Grand Total (NASF)	65,012	70,622	(5,610)

Total Need GSF (Efficiency Factor 1.65) 93,000

Existing Nevaldine Hall GSF 83,613

Addition GSF 10,000



Nevaldine Hall



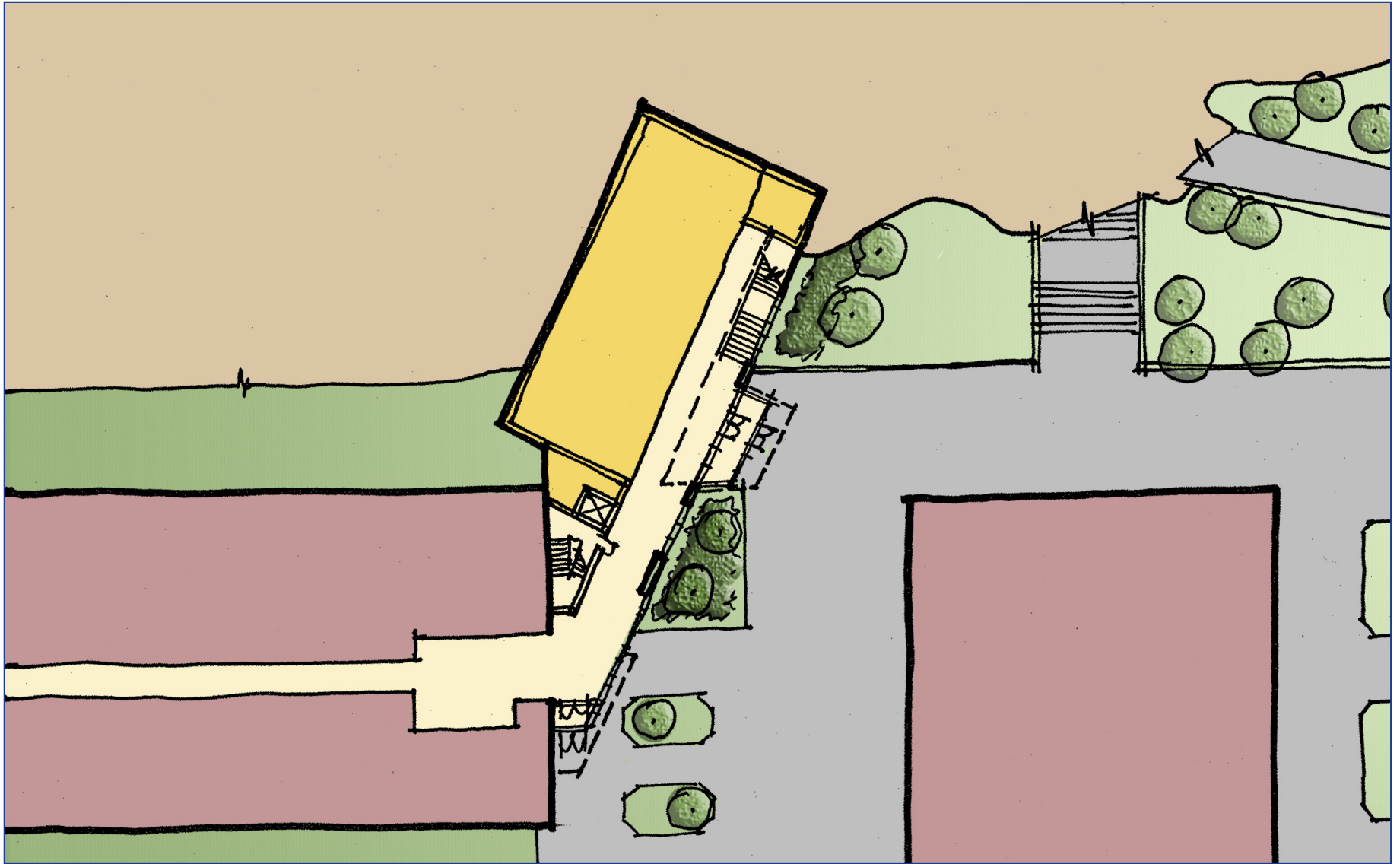


Nevaldine Hall Expansion



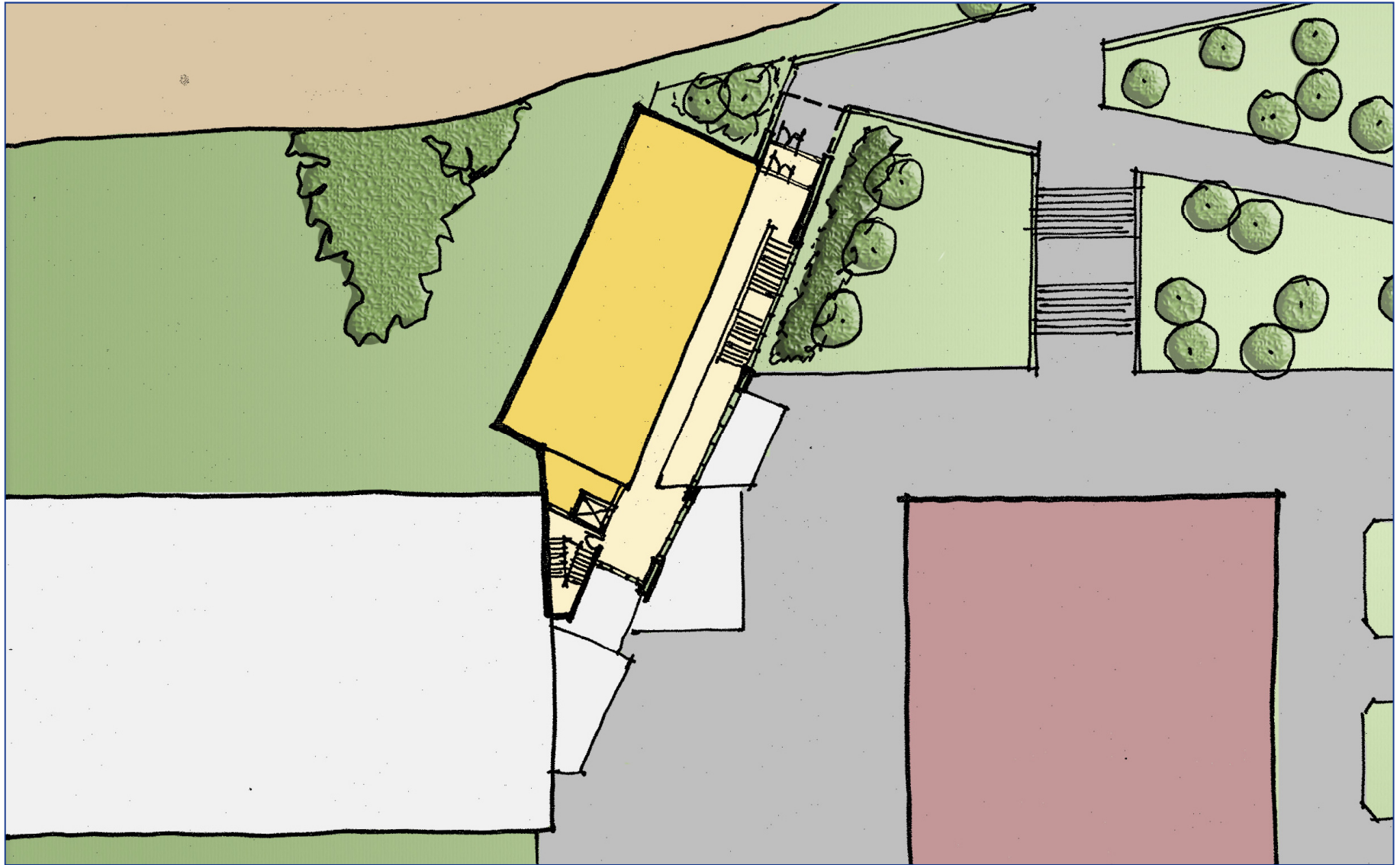


Nevaldine Hall – Plaza Level





Nevaldine Hall – Upper Level





Chaney Dining Hall





Chaney Dining Hall Expansion

Chaney Expansion	Room Description	Preliminary Program			
		NASF	Count	Total NASF	GSF
Existing Space		24,351	1	24,351	32,401
Additional Program					
Additional Public Toilet Fixtures	6 additional WCs, 4 additional lavs	400	1	400	660
Kitchen Toilet Room		80	1	80	132
College Association Offices	Move from Campus Center (2,500 nasf)	2,500	1	2,500	4,125
Faculty/ Staff Dining Room		600	1	600	990
Total		27,931		27,931	38,308

Total Need GSF (Efficiency Factor 1.65) 38,308

Existing Chaney Dining Hall GSF 32,401

Addition GSF 6,000



Chaney Dining Hall





Chaney Dining Hall Expansion





Renovated Dining Halls





Davis Health & Wellness Center





Wellness Center Expansion

Wellness Center	Preliminary Program			
	NASF	Count	Total NASF	GSF
Exam Rooms	160	4	640	768
Staff Offices	140	5	700	840
Reception Area	200	1	200	240
Treatment/ Isolation Room	180	1	180	216
Lab Area	120	1	120	144
General Storage/ Files	240	1	240	288
Storage Room	225	1	225	270
Kitchen	200	1	200	240
Multipurpose Room	200	1	200	240
Waiting Room	195	1	195	234
Toilet	80	2	160	192
Conference/ Education Room	200	1	200	240
Counseling Office	200	2	400	480
Storage Room	100	1	100	120
Total	2,440		3,760	4,512

Total Need GSF (Efficiency Factor 1.65) 4,512



Police, Criminal Justice,
and Emergency Personnel
Training Building



Existing Public Safety Building

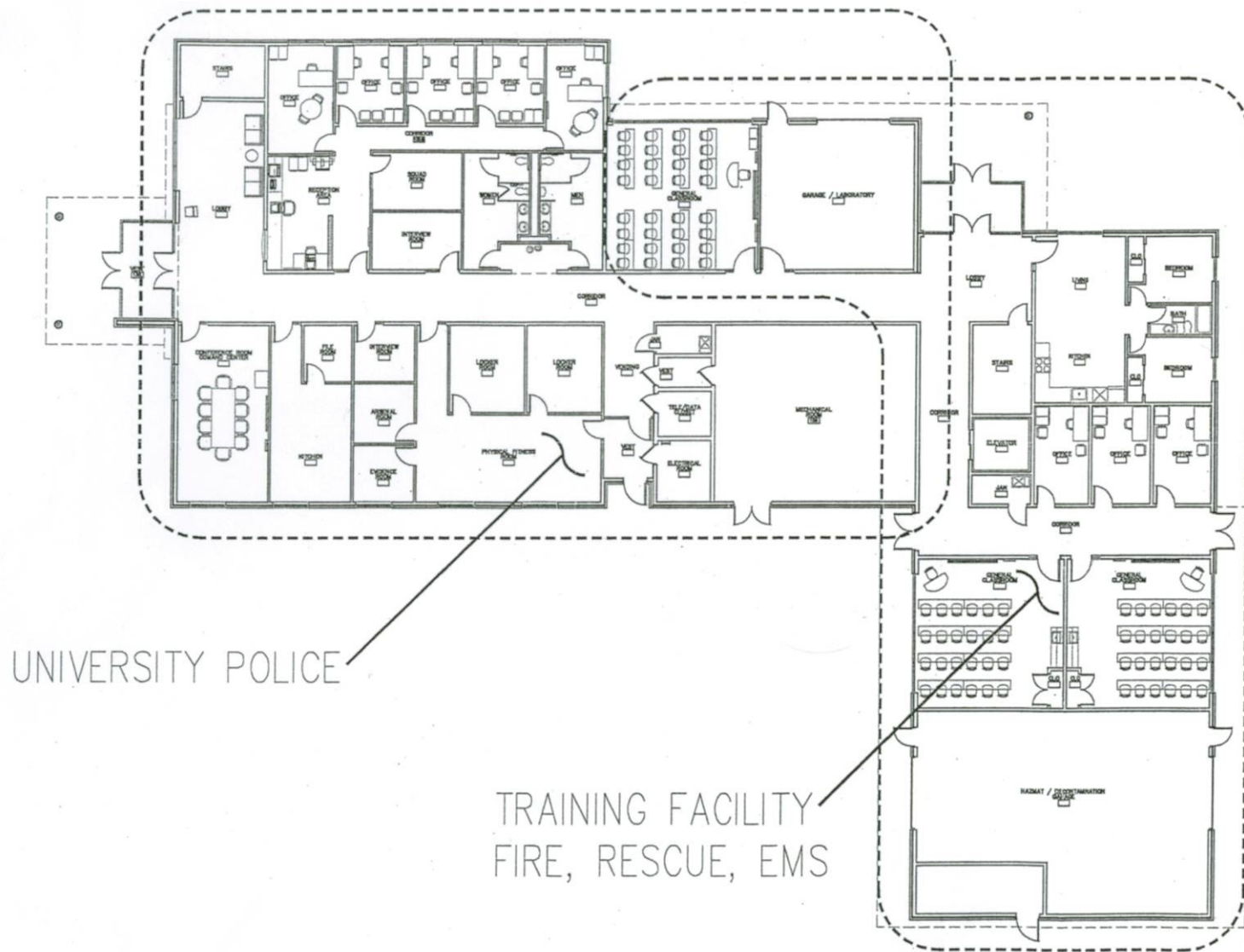


Training Building



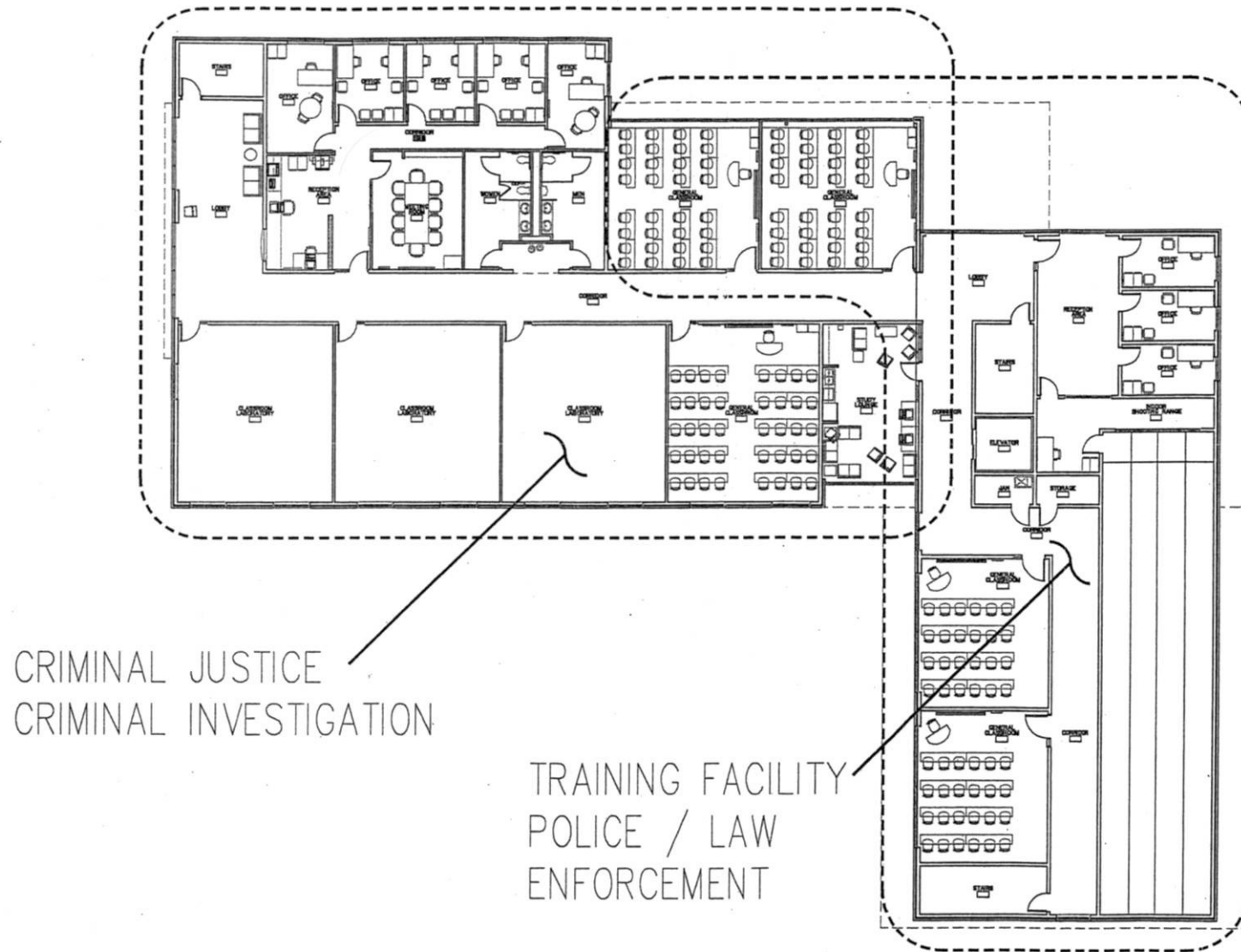


Training Building – First Floor





Training Building – Second Floor



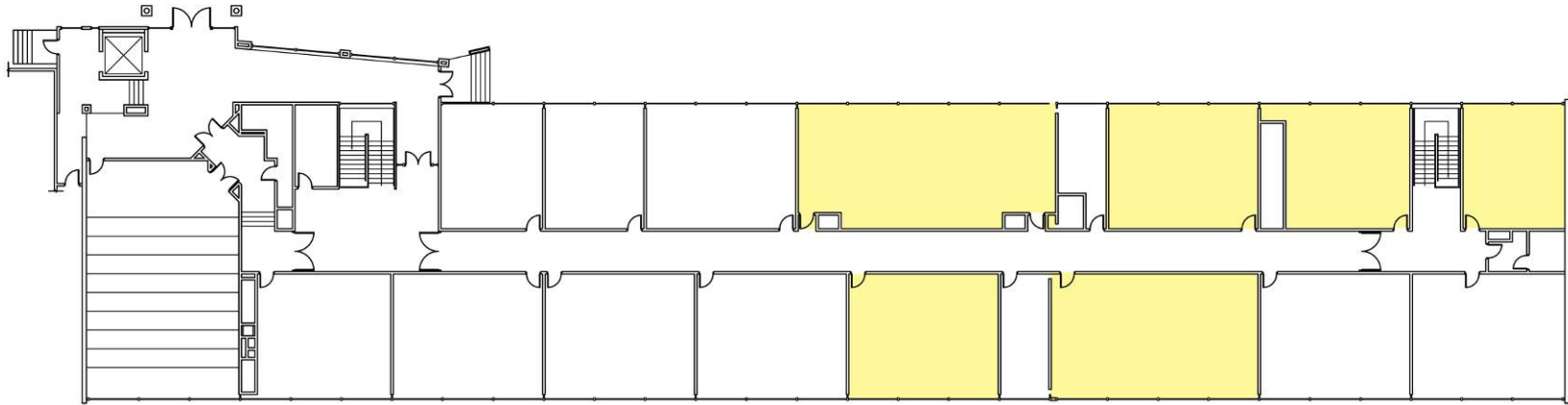


Payson Hall

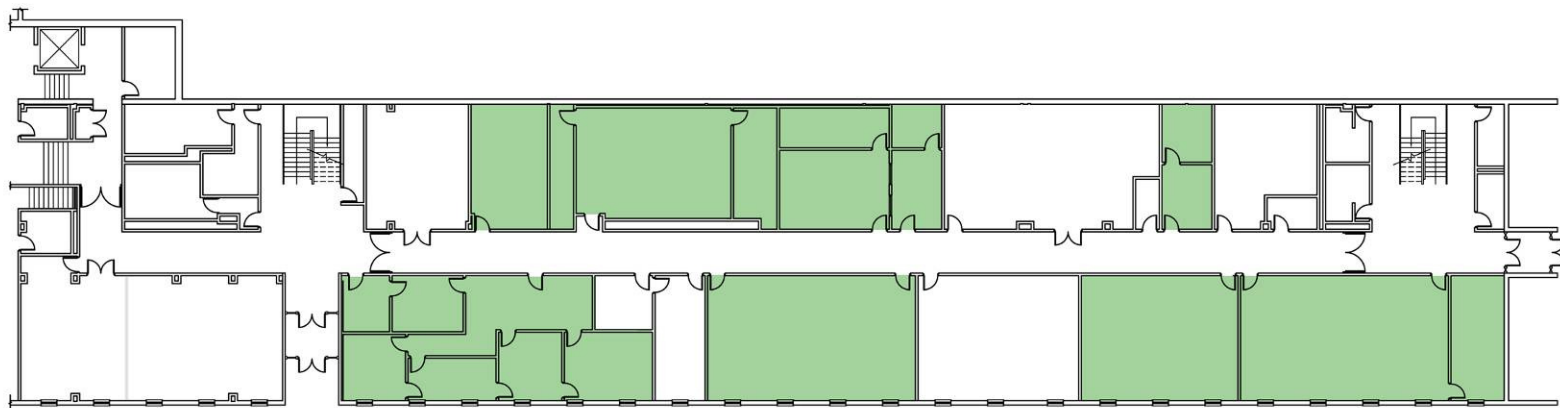




Payson Hall Renovations



Payson Hall - Second Floor: Classroom Renovations



Payson Hall - First Floor: Potential Vacated Space



Student Village





Student Village





Student Village





Learning Commons and IT System Upgrade





Proposed Site Plan

