



# SUNY Canton

The Next Generation





MAGICALQUOTE

THE **PAST** IS WRITTEN,  
BUT THE **FUTURE** IS  
LEFT FOR US TO **WRITE.**

W W W . M A G I C A L Q U O T E . C O M

JEAN-LUC PICARD



# Overview

- How is SUNY Canton relevant to changing State and regional needs?
- What are the critical issues facing Higher Education today? What are the impacts of these issues on our College and students?
- What strategies can we employ to address these issues and challenges in ways that support our unique mission?

# How is SUNY Canton relevant to changing State and regional needs?

<b>Job Sector</b>	<b>NoCo Need</b>
#1: Health Care, Soc. Assistance	1,929
#2: Retail Trade	789
#3: Educational Services	322
#4: Manufacturing	266
#7: Finance/Insurance	133
#8: Professional, Scientific, Tech.	102
#10: Waste Management	94
#11: Construction	89

Others: #5: Accommodation & Food Service; #6: Transportation/Warehousing, #9: Public Administration, #12: Information



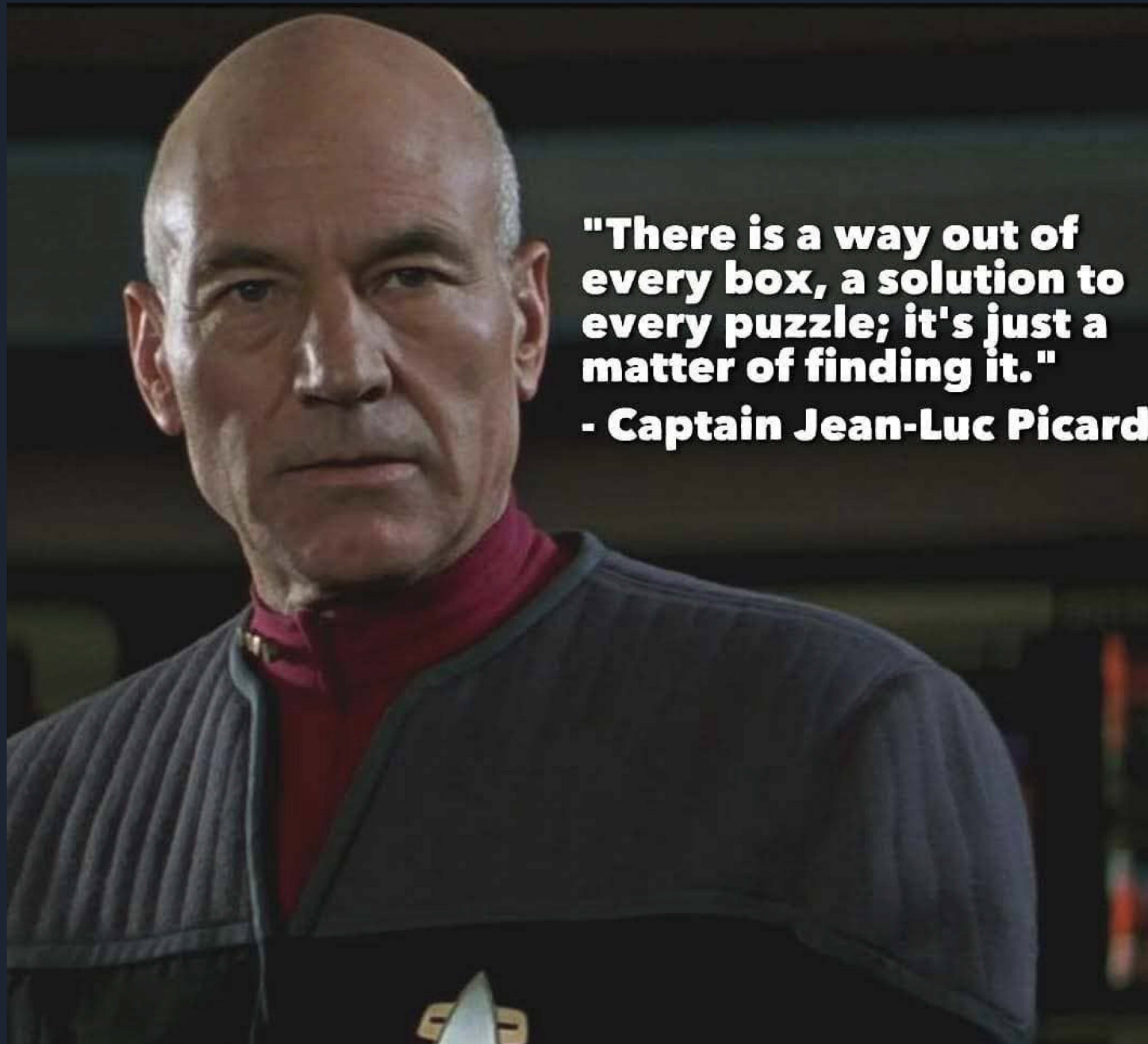
# Top Ten Job Openings

<b>Job</b>	<b># NoCo</b>
Registered Nurse	444
Retail Sales	270
Truck Drivers	159
Supervisors	98
Patient Representative	89
LPNs	86
Health Care Managers	82
Critical Care Nurses	80



Conclusion on Relevance:





**"There is a way out of every box, a solution to every puzzle; it's just a matter of finding it."**  
**- Captain Jean-Luc Picard**

# What are the critical issues facing Higher Education?

Issue	National %	Canton Impact
Government Funding	77%	Challenge
Student Mental Health	68%	Challenge
Diversity & Inclusion	63%	Net Positive
Affordability	62%	Net Positive
Student Success/Retention	58%	Challenge
Graduation Rates	50%	Challenge
Decrease in HS Population	48%	Big Challenge
Evolving Workforce Needs	47%	Very Positive
Student Enrollment	45%	Challenge
Sexual Assault/Harassment (Safety)	42%	Net Positive
Serving Non-Trad Students	35%	Very Positive
Academic Freedom/Speech	28%	Net Positive
Academic Quality	21%	Net Positive

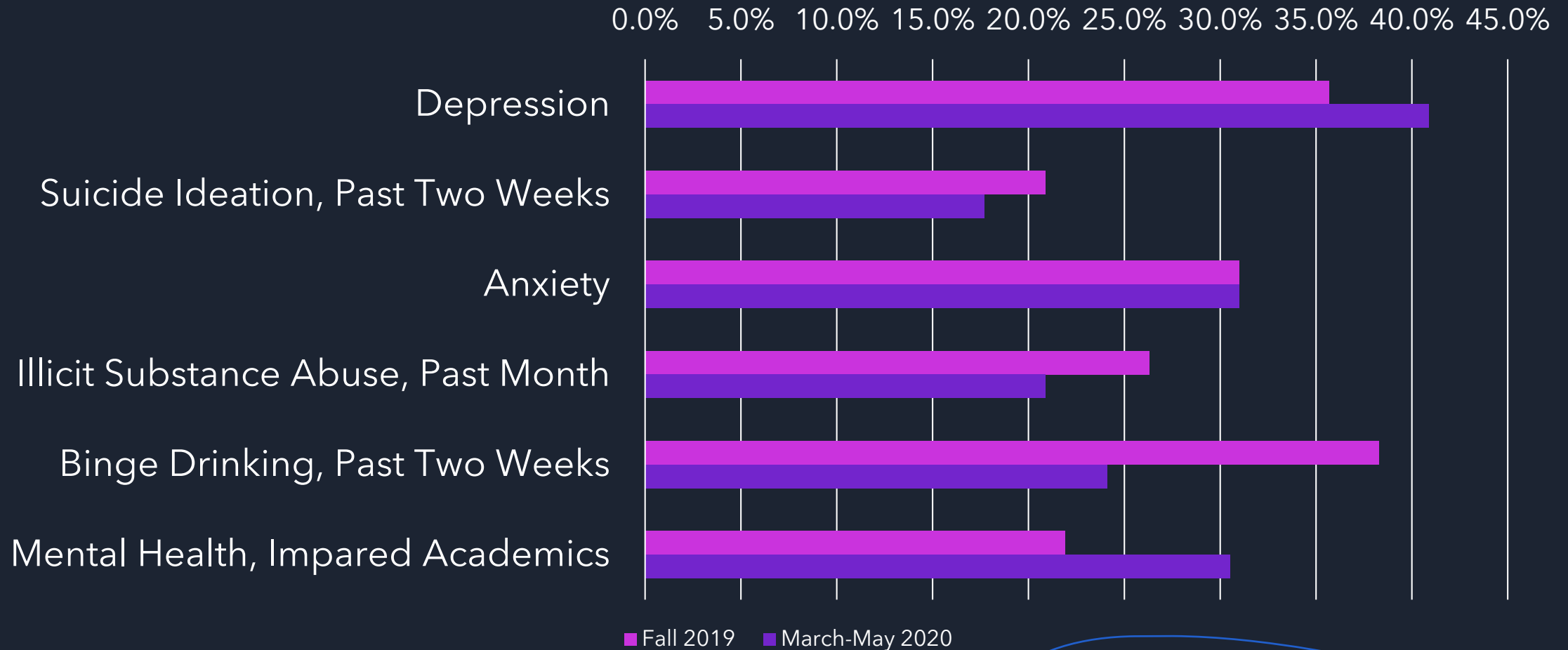
# The Issue: Government Funding



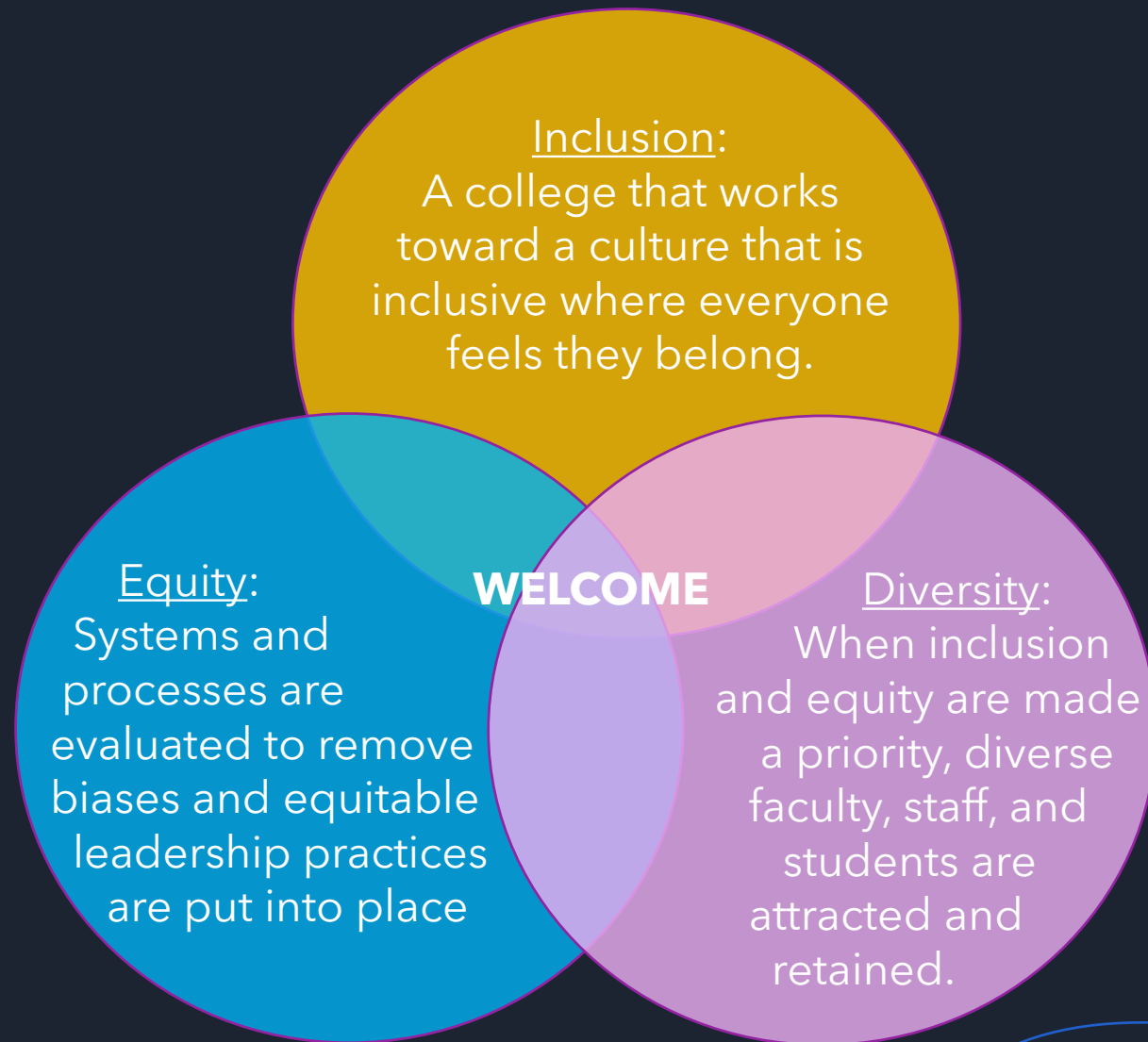


# The Issue: Student Mental Health

% Students Reporting Mental Health/Substance Abuse Issues



# The Issue: Diversity, Equity and Inclusion



# The Issue: Student Success



# Are Student Loans Worth It?

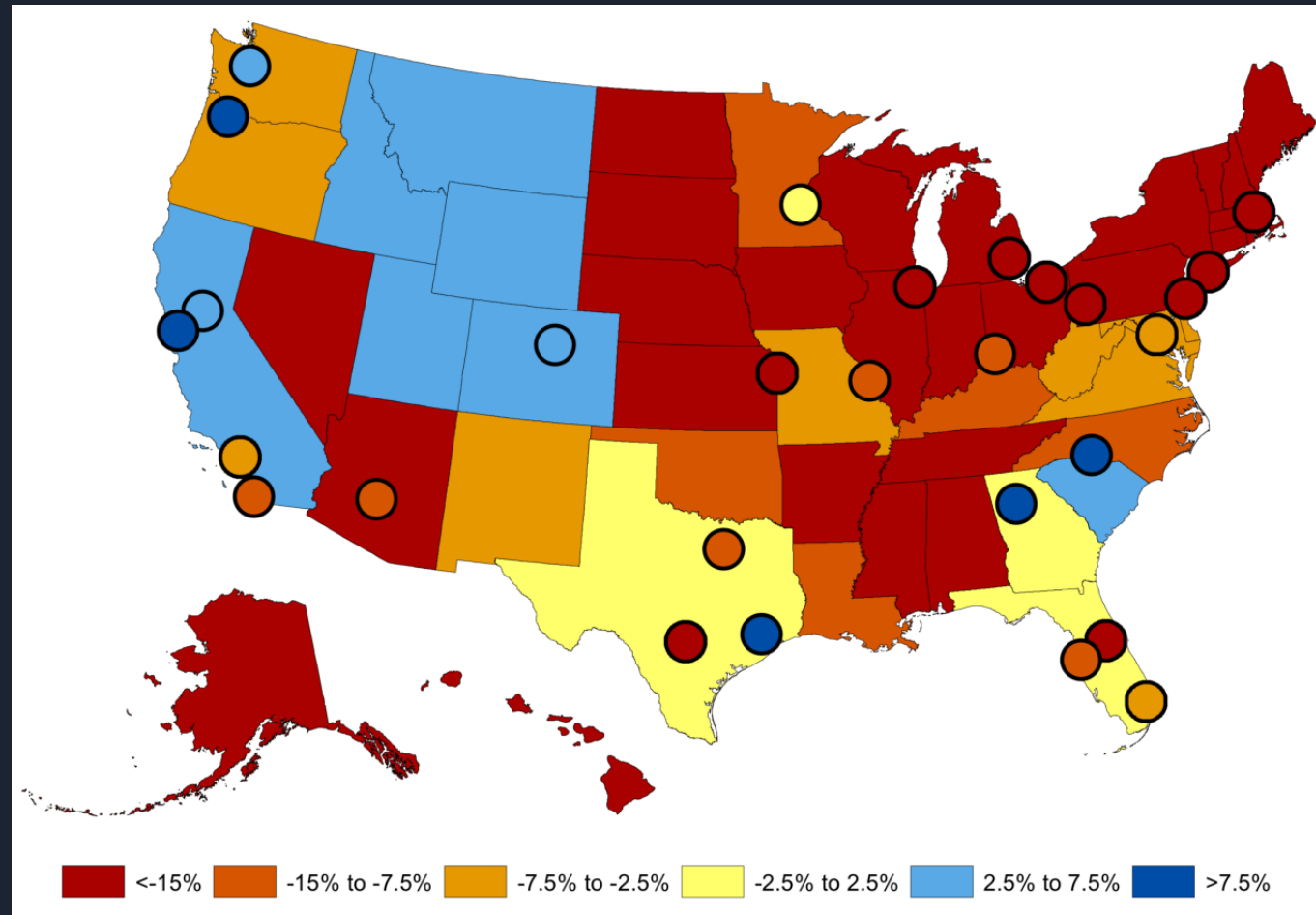
**Feel school  
provided me  
with resource  
and support to  
get a good job**

**Feel that student loans were worth it**

	Agree	Neutral	Disagree
Agree	72%	14%	13%
Neutral	36%	29%	35%
Disagree	9%	13%	78%

## The Issues: Student Enrollment; Decrease in HS Population

# Projected Drop in Number of Students Attending Regional Four-Year Colleges & Universities Between 2012 and 2029



Source: The Hechinger Report, Sept. 10, 2018





# ENGAGE

MAKING IT SO

# Opportunity: Non-Traditional Students

County	HS Diploma*	Some College*	Assoc.*	Bach.*	Grad.*
Clinton	21,296	9,399	5,816	6,794	6,197
Essex	9,874	5,120	3,499	4,355	3,408
Franklin	13,422	6,474	4,656	3,580	3,276
Hamilton	879	837	367	308	263
Jefferson	24,270	14,734	8,757	9,571	6,176
Lewis	8,070	2,695	2,231	2,031	1,536
St. Lawrence	26,410	11,635	8,160	8,730	9,762

1% of highlighted total = 1,886 students

# Our Response to Critical Issues

Issue	What We've Done/Are Doing	What We Need To/Will Do
State Funding	<ul style="list-style-type: none"><li>- Lobby SUNY for our sector</li><li>- Seek funding for initiatives</li><li>- New software</li><li>- New ways to reach alumni</li></ul>	<ul style="list-style-type: none"><li>- More grant writing</li></ul>
Student Mental Health	<ul style="list-style-type: none"><li>- Hiring additional F/T Counselor</li></ul>	<ul style="list-style-type: none"><li>- Allocating CARES funding</li></ul>
DEI	<ul style="list-style-type: none"><li>- Improved Hiring Practices</li><li>- Have hired 3 new diverse faculty</li><li>- Pathways Promises Kept Scholarship</li></ul>	<ul style="list-style-type: none"><li>- 50 paid internships for students</li><li>- stronger support for diverse faculty/staff to help retain them</li></ul>
Student Success	<ul style="list-style-type: none"><li>- Enhanced online student support</li><li>- Co-Curricular Transcript/badging</li></ul>	<ul style="list-style-type: none"><li>- Expand honors program</li><li>- Expand credentialling &amp; badging</li><li>- Create Entrepreneurship Center</li><li>- Streamline curricula</li></ul>
Student Enrollment	<ul style="list-style-type: none"><li>- Best Year Ever campaign</li><li>- Creation of new high-demand pr</li><li>- SUNY Online</li><li>- Re-hire videographer</li></ul>	<ul style="list-style-type: none"><li>- Recruitment bus trips from NYC</li><li>- Increased funding for advertising</li><li>- Partnerships with community colleges</li></ul>

# Some Unique Issues

Issue	Possible Solutions	Programs Affected
Faculty who have relevant current experience not available full time	<ul style="list-style-type: none"><li>- Hire P/T faculty employed in industry; discuss P/T pay rates (in limited areas) with union</li></ul>	Game Design, Esports Management, possibly others
Faculty in short supply and high demand	<ul style="list-style-type: none"><li>- Partnerships (such as with Upstate) to gain capacity</li><li>- Examine parity adjustments</li></ul>	Nursing
Students with fewer family resources can't afford unpaid internships	<ul style="list-style-type: none"><li>- Offer 50 paid student internships on campus (programs invited to propose)</li></ul>	All
Distance from NYC	<ul style="list-style-type: none"><li>- Partnerships with CCs near NYC</li><li>- Offer more programs in Flex</li><li>- SUNY Online *</li></ul>	<ul style="list-style-type: none"><li>- Applied Psych, ET, others TBD</li><li>- Most programs can do this</li><li>- Work to expand participation/terms**</li></ul>

\*SUNY Online is going through significant changes. Results TBD.

\*\*Programs that can be offered in SUNY Online are currently selected by SUNY

*"All Good Things..."*





# ICYMI

## Dana Hall Renovation





# ICYMI

## Newly Repaved Student Parking Lot & Miller Drive





# ICYMI

## Esports Wing





# ICYMI

## Corrections Academy Graduates



# ICYMI

## Chancellor's Awards – Faculty & Staff



Elizabeth A. Brown  
Chancellor's Award for  
Excellence in Faculty  
Service



Phil K. Lamarche  
Chancellor's Award  
for Excellence in  
Teaching



Renee L. Campbell  
Kellie R. Harris  
Chancellor's Award for  
Excellence in  
Professional Service



Matthew J. Burnett  
Chancellor's Award for  
Excellence in  
Scholarship and  
Creative Activities



**ICYMI**

---

# Chancellor's Awards for Student Excellence



Sarah O'Duffy



Andrew P. Fitch

# ICYMI

## President's Meritorious Service Awards



Bryan K. Parker



Richard J. (R.J.) Thayer  
Lenore VanderZee  
Courtney B. Bish



Marela Fiacco

# ICYMI

---

## College Council Award for Excellence in College Service



Courtney B. Bish